

Recombinant

DGRmAb®

**MCM7 (DGR17001) Rabbit mAb**

db11990

Package : 10µL 20µL 50µL 100µL

**Product Name** : MCM7 (DGR17001) Rabbit mAb**Cat.No.:** db11990**Synonyms** : MCM2; CDC47; P85MCM; P1CDC47; PNAS146; PPP1R104; P1.1-MCM3**Application** : WB, IHC-P, ICC/IF, FC, IP**Reactivity** : Human,Mouse,Rat**Host species** : Rabbit**Background**

The protein encoded by this gene is one of the highly conserved mini-chromosome maintenance proteins (MCM) that are essential for the initiation of eukaryotic genome replication. The hexameric protein complex formed by the MCM proteins is a key component of the pre-replication complex (pre\_RC) and may be involved in the formation of replication forks and in the recruitment of other DNA replication related proteins. The MCM complex consisting of this protein and MCM2, 4 and 6 proteins possesses DNA helicase activity, and may act as a DNA unwinding enzyme. Cyclin D1-dependent kinase, CDK4, is found to associate with this protein, and may regulate the binding of this protein with the tumoursuppressor protein RB1/RB. Alternatively spliced transcript variants encoding distinct isoforms have been reported. [provided by RefSeq, Jul 2008]

**Immunogen**

A synthetic peptide of human MCM7

**Gene ID**

4176

**Swiss Prot**

P33993

**Synonyms**

MCM2; CDC47; P85MCM; P1CDC47; PNAS146; PPP1R104; P1.1-MCM3

**Reactivity**

Human,Mouse,Rat

**Application**

WB, IHC-P, ICC/IF, FC, IP

**Recommended dilution**

WB: 1:1000

IHC-P: 1:50

ICC/IF: 1:50

FC: 1:20

IP: 1:20

**Calculated MW**

81 kDa

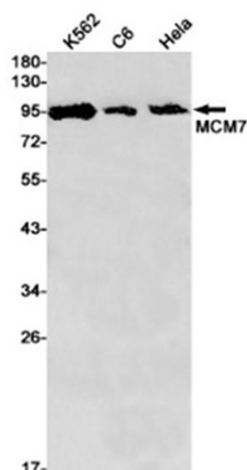
**Observed MW**

81 kDa

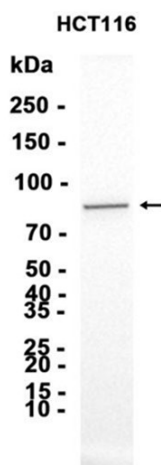
**Host species**

Rabbit

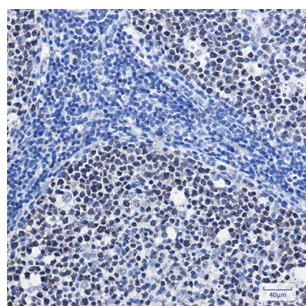
Clonality	Monoclonal
Clonality No.	DGR17001
Isotype	IgG
Purity	Affinity Purification
Conjugation	Un-conjugated
Storage Stability	Store at -20°C. Supplied in 50mM Tris-Glycine(pH 7.4), 0.15M NaCl, 40% Glycerol, 0.01% sodium azide and 0.05% BSA. Stable for 12 months from date of receipt.



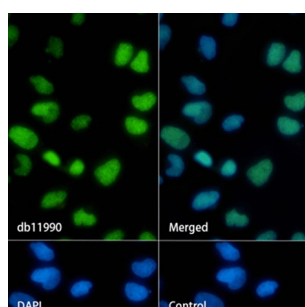
Western blot detection of MCM7 in K562, C6, HeLa cell lysates using MCM7 antibody (1:1000 diluted).



Western blot analysis of extracts from HCT116 cells using db11990 at 1:2000.



Immunohistochemical analysis of paraffin-embedded human tonsil using db11990 antibody.



Immunofluorescence analysis of HeLa cells labelling MCM7 with db11990.

The cells were fixed with 4% PFA (10min, RT) followed by treatment with 0.1% Triton X-100 (10min, RT), and blocked in 1% BSA/10% normal goat serum/0.3M glycine in 0.1% PBS-Tween 20 for 1h. The cells were then incubated with db11990 (1:50) at room temperature for 1h, followed by a further incubation at room temperature for 45min with Goat Anti Rabbit IgG (H+L)-AF488 (db10005, shown in green). Nuclear DNA was labeled in blue with DAPI.

Control: Secondary antibody only.

