

Recombinant

DGRmAb®

## USP10 (DGR18127) Rabbit mAb

db11994

Package : 10µL 20µL 50µL 100µL

**Product Name** : USP10 (DGR18127) Rabbit mAb**Cat.No.:** db11994**Synonyms** : UBPO**Application** : WB, IHC-P, ICC/IF, IP**Reactivity** : Human**Host species** : Rabbit**Background**

Ubiquitin is a highly conserved protein that is covalently linked to other proteins to regulate their function and degradation. This gene encodes a member of the ubiquitin-specific protease family of cysteine proteases. The enzyme specifically cleaves ubiquitin from ubiquitin-conjugated protein substrates. The protein is found in the nucleus and cytoplasm. It functions as a co-factor of the DNA-bound androgen receptor complex, and is inhibited by a protein in the Ras-GTPase pathway. The human genome contains several pseudogenes similar to this gene. Several transcript variants, some protein-coding and others not protein-coding, have been found for this gene. [provided by RefSeq, Jan 2013]

**Immunogen**

A synthetic peptide of human USP10

**Gene ID**

9100

**Swiss Prot**

Q14694

**Synonyms**

UBPO

**Reactivity**

Human

**Application**

WB, IHC-P, ICC/IF, IP

**Recommended dilution**

WB: 1:1000-1:5000

IHC-P: 1:200-1:500

ICC/IF: 1:200-1:500

IP: 1:10-1:100

**Calculated MW**

87 kDa

**Observed MW**

110 kDa

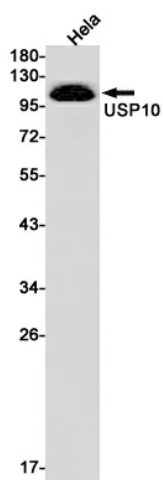
**Host species**

Rabbit

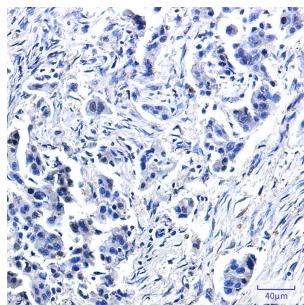
**Clonality**

Monoclonal

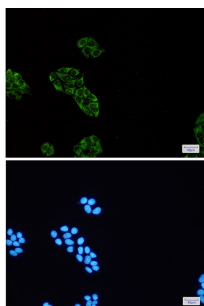
|                          |   |
|--------------------------|---|
| <b>Clonality No.</b>     | DGR18127  |
| <b>Isotype</b>           | IgG   |
| <b>Purity</b>            | Affinity Purification   |
| <b>Conjugation</b>       | Un-conjugated   |
| <b>Storage Stability</b> | Store at -20°C. Supplied in 50mM Tris-Glycine(pH 7.4), 0.15M NaCl, 40% Glycerol, 0.01% sodium azide and 0.05% BSA. Stable for 12 months from date of receipt. |



Western blot detection of USP10 in HeLa cell lysates using USP10 antibody(1:1000 diluted).



Immunohistochemical analysis of paraffin-embedded human lung cancer using db11994 antibody.



Immunofluorescent analysis of HeLa cells using db11994 antibody (green), and DAPI (blue).