

Recombinant

DGRmAb®

**SERCA2 ATPase (DGR18385) Rabbit mAb**

db12002

Package : 10µL 20µL 50µL 100µL

**Product Name :** SERCA2 ATPase (DGR18385) Rabbit mAb**Cat.No.:** db12002**Synonyms :** DD; DAR; ATP2B; SERCA2**Application :** WB, IHC-P, ICC/IF, FC**Reactivity :** Human,Mouse,Rat**Host species :** Rabbit**Background**

This gene encodes one of the SERCA Ca(2+)-ATPases, which are intracellular pumps located in the sarcoplasmic or endoplasmic reticula of muscle cells. This enzyme catalyzes the hydrolysis of ATP coupled with the translocation of calcium from the cytosol into the sarcoplasmic reticulum lumen, and is involved in regulation of the contraction/relaxation cycle. Mutations in this gene cause Darier-White disease, also known as keratosis follicularis, an autosomal dominant skin disorder characterized by loss of adhesion between epidermal cells and abnormal keratinization. Alternative splicing results in multiple transcript variants encoding different isoforms. [provided by RefSeq, Oct 2008]

**Immunogen**

A synthetic peptide of human SERCA2 ATPase

**Gene ID**

488

**Swiss Prot**

P16615

**Synonyms**

DD; DAR; ATP2B; SERCA2

**Reactivity**

Human,Mouse,Rat

**Application**

WB, IHC-P, ICC/IF, FC

**Recommended dilution**

WB: 1:1000-1:5000

IHC-P: 1:50-1:100

ICC/IF: 1:100-1:200

FC: 1:100-1:1000

**Calculated MW**

115 kDa

**Observed MW**

115 kDa

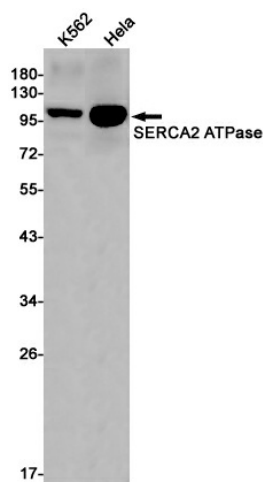
**Host species**

Rabbit

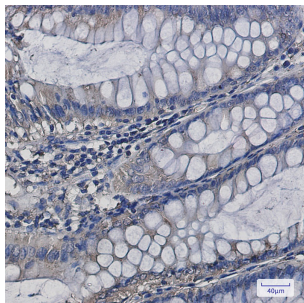
**Clonality**

Monoclonal

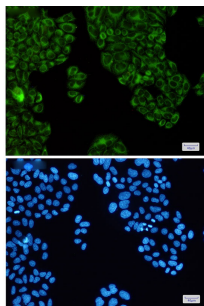
Clonality No.	DGR18385
Isotype	IgG
Purity	Affinity Purification
Conjugation	Un-conjugated
Storage Stability	Store at -20°C. Supplied in 50mM Tris-Glycine(pH 7.4), 0.15M NaCl, 40% Glycerol, 0.01% sodium azide and 0.05% BSA. Stable for 12 months from date of receipt.



Western blot detection of SERCA2 ATPase in K562,HeLa cell lysates using SERCA2 ATPase antibody(1:1000 diluted).



Immunohistochemical analysis of paraffin-embedded human colon cancer using db12002 antibody.



Immunofluorescent analysis of HeLa cells using db12002 antibody (green), and DAPI (blue).