

Recombinant

DGRmAb®

Rad51 (DGR18573) Rabbit mAb

db12015

Package : 10µL 20µL 50µL 100µL

Product Name : Rad51 (DGR18573) Rabbit mAb**Cat.No.:** db12015**Synonyms** : RECA; BRCC5; FANCR; MRMV2; HRAD51; RAD51A; HsRad51; HsT16930**Application** : WB, IHC-P, ICC/IF, FC, IP**Reactivity** : Human,Mouse,Rat**Host species** : Rabbit**Background**

The protein encoded by this gene is a member of the RAD51 protein family. RAD51 family members are highly similar to bacterial RecA and *Saccharomyces cerevisiae* Rad51, and are known to be involved in the homologous recombination and repair of DNA. This protein can interact with the ssDNA-binding protein RPA and RAD52, and it is thought to play roles in homologous pairing and strand transfer of DNA. This protein is also found to interact with BRCA1 and BRCA2, which may be important for the cellular response to DNA damage. BRCA2 is shown to regulate both the intracellular localization and DNA-binding ability of this protein. Loss of these controls following BRCA2 inactivation may be a key event leading to genomic instability and tumorigenesis. Multiple transcript variants encoding different isoforms have been found for this gene. [provided by RefSeq, Aug 2009]

Immunogen

A synthetic peptide of human Rad51

Gene ID

5888

Swiss Prot

Q06609

Synonyms

RECA; BRCC5; FANCR; MRMV2; HRAD51; RAD51A; HsRad51; HsT16930

Reactivity

Human,Mouse,Rat

Application

WB, IHC-P, ICC/IF, FC, IP

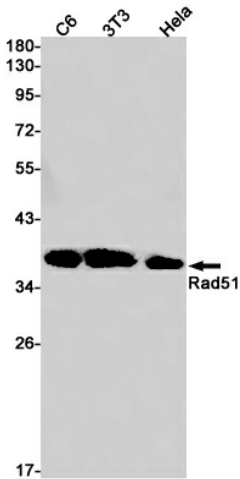
Recommended dilutionWB: 1:2000-1:20000
IHC-P: 1:100-1:500
ICC/IF: 1:500-1:1000
FC: 1:100-1:1000
IP: 1:10-1:100**Calculated MW**

37 kDa

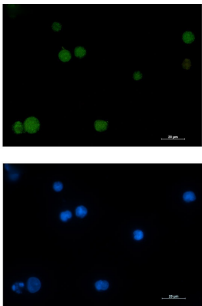
Observed MW

37 kDa

Host species	Rabbit
Clonality	Monoclonal
Clonality No.	DGR18573
Isotype	IgG
Purity	Affinity Purification
Conjugation	Un-conjugated
Storage Stability	Store at -20°C. Supplied in 50mM Tris-Glycine(pH 7.4), 0.15M NaCl, 40% Glycerol, 0.01% sodium azide and 0.05% BSA. Stable for 12 months from date of receipt.



Western blot detection of Rad51 in C6,3T3,HeLa cell lysates using Rad51 antibody(1:1000 diluted).



Immunofluorescent analysis of Jurkat cells using db12015 antibody (green), and DAPI (blue).