

Recombinant

DGRmAb®

Creatine Kinase B type (DGR18824) Rabbit mAb

db12026

Package : 10µL 20µL 50µL 100µL

Product Name : Creatine Kinase B type (DGR18824) Rabbit mAb**Cat.No.:** db12026**Synonyms** : BCK; B-CK; CKBB; HEL-211; HEL-S-29**Application** : WB, IHC-P**Reactivity** : Human,Mouse,Rat**Host species** : Rabbit**Background**

The protein encoded by this gene is a cytoplasmic enzyme involved in energy homeostasis. The encoded protein reversibly catalyzes the transfer of phosphate between ATP and various phosphogens such as creatine phosphate. It acts as a homodimer in brain as well as in other tissues, and as a heterodimer with a similar muscle isozyme in heart. The encoded protein is a member of the ATP:guanido phosphotransferase protein family. A pseudogene of this gene has been characterized. [provided by RefSeq, Jul 2008]

Immunogen

A synthetic peptide of human Creatine kinase B type

Gene ID

1152

Swiss Prot

P12277

Synonyms

BCK; B-CK; CKBB; HEL-211; HEL-S-29

Reactivity

Human,Mouse,Rat

Application

WB, IHC-P

Recommended dilution

WB: 1:5000-1:50000

IHC-P: 1:200-1:500

Calculated MW

43 kDa

Observed MW

43 kDa

Host species

Rabbit

Clonality

Monoclonal

Clonality No.

DGR18824

Isotype

IgG

Purity

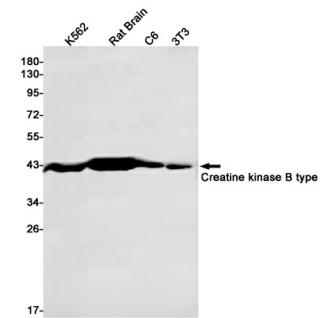
Affinity Purification

Conjugation

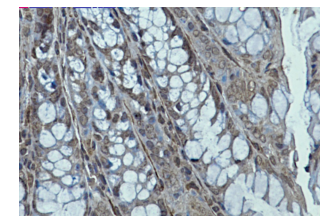
Un-conjugated

Storage Stability

Store at -20°C. Supplied in 50mM Tris-Glycine(pH 7.4), 0.15M NaCl, 40% Glycerol, 0.01% sodium azide and 0.05% BSA. Stable for 12 months from date of receipt.



Western blot detection of Creatine kinase B type in K562,Rat Brain,C6,3T3 cell lysates using Creatine kinase B type antibody(1:1000 diluted).



Immunohistochemical analysis of paraffin-embedded mouse colon using db12026 antibody.