

Recombinant

DGRmAb®

Fibrillarin (DGR18857) Rabbit mAb

db12029

Package : 10µL 20µL 50µL 100µL

Product Name : Fibrillarin (DGR18857) Rabbit mAb**Cat.No.:** db12029**Synonyms** : FIB; FLRN; Nop1; RNU3IP1**Application** : WB, ICC/IF, FC**Reactivity** : Human,Mouse,Rat**Host species** : Rabbit**Background**

This gene product is a component of a nucleolar small nuclear ribonucleoprotein (snRNP) particle thought to participate in the first step in processing preribosomal RNA. It is associated with the U3, U8, and U13 small nuclear RNAs and is located in the dense fibrillar component (DFC) of the nucleolus. The encoded protein contains an N-terminal repetitive domain that is rich in glycine and arginine residues, like fibrillarins in other species. Its central region resembles an RNA-binding domain and contains an RNP consensus sequence. Antisera from approximately 8% of humans with the autoimmune disease scleroderma recognize fibrillarin. [provided by RefSeq, Jul 2008]

Immunogen

A synthetic peptide of human Fibrillarin

Gene ID

2091

Swiss Prot

P22087

Synonyms

FIB; FLRN; Nop1; RNU3IP1

Reactivity

Human,Mouse,Rat

Application

WB, ICC/IF, FC

Recommended dilution

WB: 1:1000-1:5000

ICC/IF: 1:500-1:5000

FC: 1:10-1:100

Calculated MW

34 kDa

Observed MW

34 kDa

Host species

Rabbit

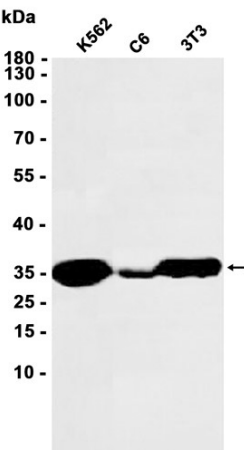
Clonality

Monoclonal

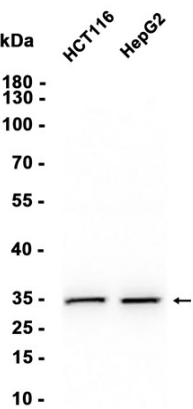
Clonality No.

DGR18857

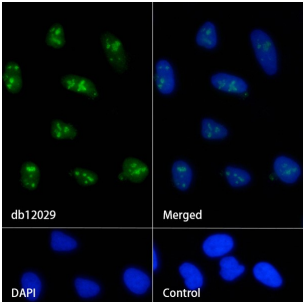
Isotype	IgG
Purity	Affinity Purification
Conjugation	Un-conjugated
Storage Stability	Store at -20°C. Supplied in 50mM Tris-Glycine(pH 7.4), 0.15M NaCl, 40% Glycerol, 0.01% sodium azide and 0.05% BSA. Stable for 12 months from date of receipt.



Western blot analysis of extracts from K562, C6, 3T3 cells using db12029 at 1:1000.



Western blot analysis of extracts from HCT116, HepG2 cells using db12029 at 1:1000.



Immunofluorescence analysis of HeLa cells labelling Fibrillarin with db12029.

The cells were fixed with 4% PFA (10min, RT) followed by treatment with 0.1% Triton X-100 (10min, RT), and blocked in 1% BSA/10% normal goat serum/0.3M glycine in 0.1% PBS-Tween 20 for 1h. The cells were then incubate with db12029 (1:500) at room temprature for 1h, followed by a further incubation at room temperature for 45min with Goat Anti Rabbit IgG (H+L)-AF488 ([db10005](#), shown in green). Nuclear DNA was labeled in blue with DAPI.

Control: Secondary antibody only.

