

Recombinant

DGRmAb®

Cyclooxygenase 1 (DGR13562) Rabbit mAb

db12040

Package : 10µL 20µL 50µL 100µL

Product Name : Cyclooxygenase 1 (DGR13562) Rabbit mAb

Cat.No.: db12040

Synonyms : COX1; COX3; PHS1; PCOX1; PES-1; PGHS1; PTGHS; PGG/HS; PGHS-1

Application : WB, IHC-P, ICC/IF, FC, IP

Reactivity : Human,Mouse,Rat

Host species : Rabbit

Background

This is one of two genes encoding similar enzymes that catalyze the conversion of arachinodate to prostaglandin. The encoded protein regulates angiogenesis in endothelial cells, and is inhibited by nonsteroidal anti-inflammatory drugs such as aspirin. Based on its ability to function as both a cyclooxygenase and as a peroxidase, the encoded protein has been identified as a moonlighting protein. The protein may promote cell proliferation during tumor progression. Alternative splicing results in multiple transcript variants. [provided by RefSeq, Jan 2014]

Immunogen

A synthetic peptide of human COX1/Cyclooxygenase 1

Gene ID

5742

Swiss Prot

P23219

Synonyms

COX1; COX3; PHS1; PCOX1; PES-1; PGHS1; PTGHS; PGG/HS; PGHS-1

Reactivity

Human,Mouse,Rat

Application

WB, IHC-P, ICC/IF, FC, IP

Recommended dilution

WB: 1:1000-1:5000

IHC-P: 1:100-1:200

ICC/IF: 1:50-1:100

FC: 1:10-1:100

IP: 1:10-1:100

Calculated MW

69 kDa

Observed MW

69 kDa

Host species

Rabbit

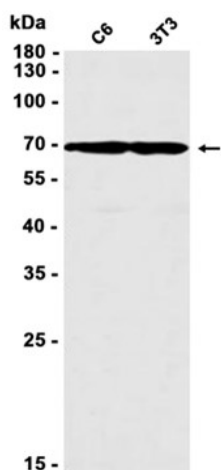
Clonality

Monoclonal

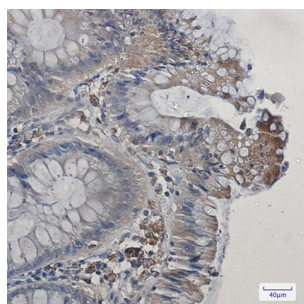
Clonality No.

DGR13562

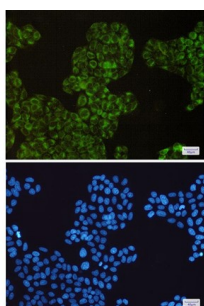
Isotype	IgG
Purity	Affinity Purification
Conjugation	Un-conjugated
Storage Stability	Store at -20°C. Supplied in 50mM Tris-Glycine(pH 7.4), 0.15M NaCl, 40% Glycerol, 0.01% sodium azide and 0.05% BSA. Stable for 12 months from date of receipt.



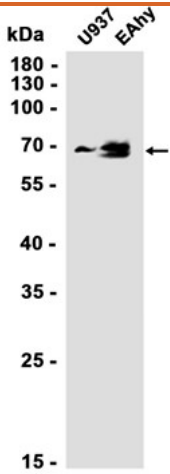
Western blot analysis of extracts from C6, 3T3 cells using db12040 at 1:1000.



Immunohistochemical analysis of paraffin-embedded human colon cancer using db12040 antibody.



Immunofluorescent analysis of HeLa cells using db12040 antibody (green), and DAPI (blue).



Western blot analysis of extracts from U937, EAhy cells using db12040 at 1:1000.