

Recombinant

DGRmAb®

POLD1 (DGR11844) Rabbit mAb

db12112

Package : 10µL 20µL 50µL 100µL

Product Name : POLD1 (DGR11844) Rabbit mAb**Cat.No.:** db12112**Synonyms :** CDC2; MDPL; POLD; CRCS10**Application :** WB, IHC-P, ICC/IF, FC**Reactivity :** Human,Mouse,Rat**Host species :** Rabbit**Background**

This gene encodes the 125-kDa catalytic subunit of DNA polymerase delta. DNA polymerase delta possesses both polymerase and 3' to 5' exonuclease activity and plays a critical role in DNA replication and repair. Alternatively spliced transcript variants have been observed for this gene, and a pseudogene of this gene is located on the long arm of chromosome 6. [provided by RefSeq, Mar 2012]

Immunogen

A synthetic peptide of human DNA Polymerase delta, catalytic subunit

Gene ID

5424

Swiss Prot

P28340

Synonyms

CDC2; MDPL; POLD; CRCS10

Reactivity

Human,Mouse,Rat

Application

WB, IHC-P, ICC/IF, FC

Recommended dilution

WB: 1:1000-1:5000

IHC-P: 1:50-1:100

ICC/IF: 1:100-1:200

FC: 1:100-1:200

Calculated MW

124 kDa

Observed MW

124 kDa

Host species

Rabbit

Clonality

Monoclonal

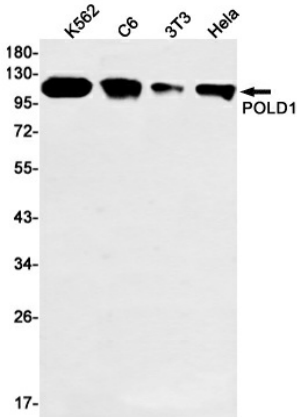
Clonality No.

DGR11844

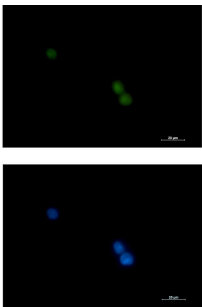
Isotype

IgG

Purity	Affinity Purification
Conjugation	Un-conjugated
Storage Stability	Store at -20°C. Supplied in 50mM Tris-Glycine(pH 7.4), 0.15M NaCl, 40% Glycerol, 0.01% sodium azide and 0.05% BSA. Stable for 12 months from date of receipt.



Western blot detection of POLD1 in K562,C6,3T3,Hela cell lysates using POLD1 antibody(1:1000 diluted).



Immunofluorescent analysis of K562 cells using db12112 antibody (green), and DAPI (blue).