

Recombinant

DGRmAb®

ALDH1A1 (DGR11956) Rabbit mAb

db12121

Package : 10µL 20µL 50µL 100µL

Product Name : ALDH1A1 (DGR11956) Rabbit mAb**Cat.No.:** db12121**Synonyms** : ALDC; ALDH1; HEL-9; HEL12; PUMB1; ALDH11; RALDH1; ALDH-E1; HEL-S-53e**Application** : WB, IHC-P, ICC/IF, FC, IP**Reactivity** : Human,Mouse**Host species** : Rabbit**Background**

The protein encoded by this gene belongs to the aldehyde dehydrogenase family. Aldehyde dehydrogenase is the next enzyme after alcohol dehydrogenase in the major pathway of alcohol metabolism. There are two major aldehyde dehydrogenase isozymes in the liver, cytosolic and mitochondrial, which are encoded by distinct genes, and can be distinguished by their electrophoretic mobility, kinetic properties, and subcellular localization. This gene encodes the cytosolic isozyme. Studies in mice show that through its role in retinol metabolism, this gene may also be involved in the regulation of the metabolic responses to high-fat diet. [provided by RefSeq, Mar 2011]

Immunogen

A synthetic peptide of human ALDH1A1

Gene ID

216

Swiss Prot

P00352

Synonyms

ALDC; ALDH1; HEL-9; HEL12; PUMB1; ALDH11; RALDH1; ALDH-E1; HEL-S-53e

Reactivity

Human,Mouse

Application

WB, IHC-P, ICC/IF, FC, IP

Recommended dilutionWB: 1:1000
IHC-P: 1:50
ICC/IF: 1:100-1:200
FC: 1:20-1:50
IP: 1:20-1:50**Calculated MW**

55 kDa

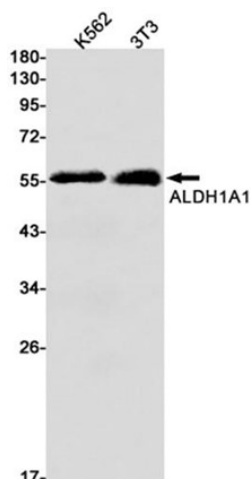
Observed MW

55 kDa

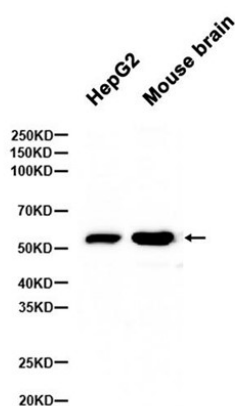
Host species

Rabbit

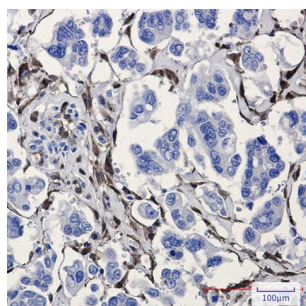
Clonality	Monoclonal
Clonality No.	DGR11956
Isotype	IgG
Purity	Affinity Purification
Conjugation	Un-conjugated
Storage Stability	Store at -20°C. Supplied in 50mM Tris-Glycine(pH 7.4), 0.15M NaCl, 40% Glycerol, 0.01% sodium azide and 0.05% BSA. Stable for 12 months from date of receipt.



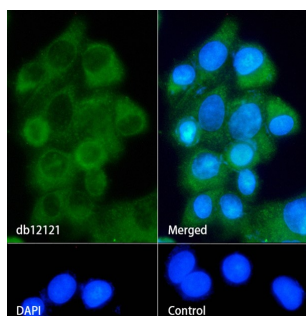
Western blot detection of ALDH1A1 in K562,3T3 cell lysates using ALDH1A1 antibody(1:1000 diluted).



Western blot analysis of extracts from HepG2 cells and Mouse brain tissue using db12121 at 1:1000.



Immunohistochemical analysis of paraffin-embedded human Cholangiocarcinoma using db12121 antibody.



Immunofluorescence analysis of HepG2 cells labelling ALDH1A1 with db12121.

The cells were fixed with cold 100% methanol (10min, 4℃) and blocked in 1% BSA/10% normal goat serum/0.3M glycine in 0.1% PBS-Tween 20 for 1h. The cells were then incubate with db12121 (1:100) at room temprature for 1h, followed by a further incubation at room temperature for 45min with Goat Anti Rabbit IgG (H+L)-AF488 ([db10005](#), shown in green). Nuclear DNA was labeled in blue with DAPI.

Control: Secondary antibody only.

