

Recombinant

DGRmAb®

SATB2 (DGR11970) Rabbit mAb

db12124

Package : 10µL 20µL 50µL 100µL

Product Name : SATB2 (DGR11970) Rabbit mAb**Cat.No.:** db12124**Synonyms** : GLSS**Application** : WB, IHC-P**Reactivity** : Human**Host species** : Rabbit**Background**

This gene encodes a DNA binding protein that specifically binds nuclear matrix attachment regions. The encoded protein is involved in transcription regulation and chromatin remodeling. Defects in this gene are associated with isolated cleft palate and cognitive disability. Alternate splicing results in multiple transcript variants that encode the same protein. [provided by RefSeq, Feb 2010]

Immunogen

A synthetic peptide of human SATB2

Gene ID

23314

Swiss Prot

Q9UPW6

Synonyms

GLSS

Reactivity

Human

Application

WB, IHC-P

Recommended dilution

WB: 1:1000-1:5000

IHC-P: 1:100-1:200

Calculated MW

83 kDa

Observed MW

83 kDa

Host species

Rabbit

Clonality

Monoclonal

Clonality No.

DGR11970

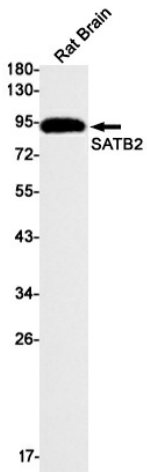
Isotype

IgG

Purity

Affinity Purification

Conjugation	Un-conjugated
Storage Stability	Store at -20°C. Supplied in 50mM Tris-Glycine(pH 7.4), 0.15M NaCl, 40% Glycerol, 0.01% sodium azide and 0.05% BSA. Stable for 12 months from date of receipt.



Western blot detection of SATB2 in Rat Brain lysates using SATB2 antibody(1:1000 diluted).