

Recombinant

DGRmAb®

Phospho-c-Jun (Ser63) (DGR13611) Rabbit mAb

db12132

Package : 10µL 20µL 50µL 100µL

Product Name : Phospho-c-Jun (Ser63) (DGR13611) Rabbit mAb**Cat.No.:** db12132**Synonyms** : AP1; p39; AP-1; c-Jun**Application** : WB, IHC-P, ICC/IF**Reactivity** : Human,Mouse,Rat**Host species** : Rabbit**Background**

This gene is the putative transforming gene of avian sarcoma virus 17. It encodes a protein which is highly similar to the viral protein, and which interacts directly with specific target DNA sequences to regulate gene expression. This gene is intronless and is mapped to 1p32-p31, a chromosomal region involved in both translocations and deletions in human malignancies. [provided by RefSeq, Jul 2008]

Immunogen

A synthetic phosphopeptide corresponding to residues surrounding Ser63 of human c-Jun

Gene ID

3725

Swiss Prot

P05412

Synonyms

AP1; p39; AP-1; c-Jun

Reactivity

Human,Mouse,Rat

Application

WB, IHC-P, ICC/IF

Recommended dilution

WB: 1:1000-1:5000

IHC-P: 1:100-1:200

ICC/IF: 1:100-1:200

Calculated MW

36 kDa

Observed MW

43 kDa

Host species

Rabbit

Clonality

Monoclonal

Clonality No.

DGR13611

Isotype

IgG

Purity

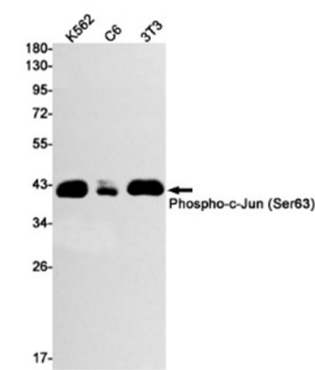
Affinity Purification

Conjugation

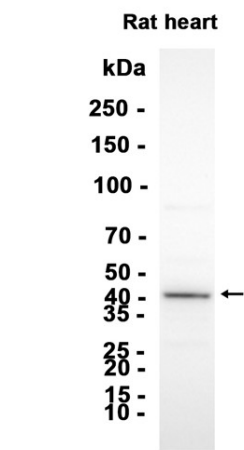
Un-conjugated

Storage Stability

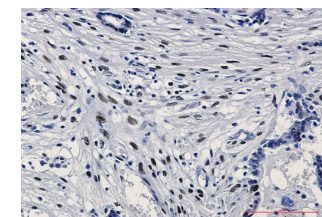
Store at -20°C. Supplied in 50mM Tris-Glycine(pH 7.4), 0.15M NaCl, 40% Glycerol, 0.01% sodium azide and 0.05% BSA. Stable for 12 months from date of receipt.



Western blot detection of Phospho-c-Jun (Ser63) in K562,C6,3T3 cell lysates using Phospho-c-Jun (Ser63) antibody(1:1000 diluted).



Western blot analysis of extracts from Rat heart tissue using db12132 at 1:1000.



Immunohistochemical analysis of paraffin-embedded human breast cancer using db12132 antibody.