

Recombinant

DGRmAb®

Cytochrome C (DGR13732) Rabbit mAb

db12144

Package : 10µL 20µL 50µL 100µL

Product Name : Cytochrome C (DGR13732) Rabbit mAb**Cat.No.:** db12144**Synonyms** : CYC; HCS; THC4**Application** : WB, IHC-P, ICC/IF, IP**Reactivity** : Human,Mouse,Rat**Host species** : Rabbit**Background**

This gene encodes a small heme protein that functions as a central component of the electron transport chain in mitochondria. The encoded protein associates with the inner membrane of the mitochondrion where it accepts electrons from cytochrome b and transfers them to the cytochrome oxidase complex. This protein is also involved in initiation of apoptosis. Mutations in this gene are associated with autosomal dominant nonsyndromic thrombocytopenia. Numerous processed pseudogenes of this gene are found throughout the human genome.[provided by RefSeq, Jul 2010]

Immunogen

A synthetic peptide of human Cytochrome C

Gene ID

54205

Swiss Prot

P99999

Synonyms

CYC; HCS; THC4

Reactivity

Human,Mouse,Rat

Application

WB, IHC-P, ICC/IF, IP

Recommended dilution

WB: 1:1000-1:5000

IHC-P: 1:200-1:500

ICC/IF: 1:100

IP: 1:20-1:50

Calculated MW

12 kDa

Observed MW

14 kDa

Host species

Rabbit

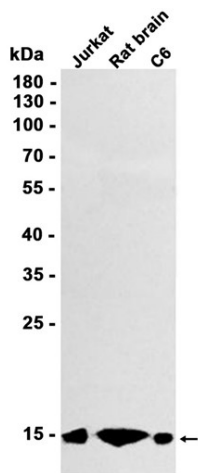
Clonality

Monoclonal

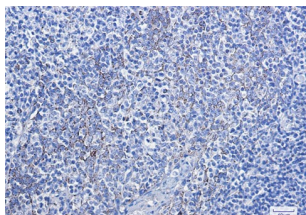
Clonality No.

DGR13732

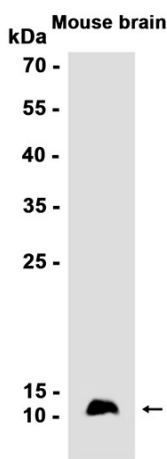
Isotype	IgG
Purity	Affinity Purification
Conjugation	Un-conjugated
Storage Stability	Store at -20°C. Supplied in 50mM Tris-Glycine(pH 7.4), 0.15M NaCl, 40% Glycerol, 0.01% sodium azide and 0.05% BSA. Stable for 12 months from date of receipt.



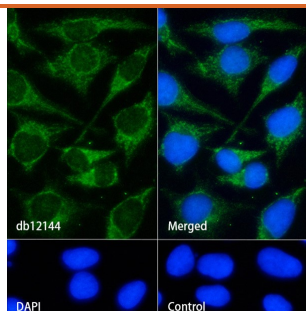
Western blot analysis of extracts from Jurkat, C6 cells and Rat brain tissue using db12144 at 1:1000.



Immunohistochemical analysis of paraffin-embedded human tonsil using db12144 antibody.



Western blot analysis of extracts from Mouse brain tissue using db12144 at 1:1000.



Immunofluorescence analysis of HeLa cells labelling Cytochrome C with db12144.

The cells were fixed with cold 100% methanol (10min, 4°C) and blocked in 1% BSA/10% normal goat serum/0.3M glycine in 0.1% PBS-Tween 20 for 1h. The cells were then incubate with db12144 (1:100) at room temprature for 1h, followed by a further incubation at room temperature for 45min with Goat Anti Rabbit IgG (H+L)-AF488 (db10005, shown in green).

Nuclear DNA was labeled in blue with DAPI.

Control: Secondary antibody only.