

Recombinant

DGRmAb®

**E2F1 (DGR13759) Rabbit mAb**

db12146

Package : 10µL 20µL 50µL 100µL

**Product Name** : E2F1 (DGR13759) Rabbit mAb**Cat.No.:** db12146**Synonyms** : RBP3; E2F-1; RBAP1; RBBP3**Application** : WB, IP**Reactivity** : Human,Mouse,Rat**Host species** : Rabbit**Background**

The protein encoded by this gene is a member of the E2F family of transcription factors. The E2F family plays a crucial role in the control of cell cycle and action of tumor suppressor proteins and is also a target of the transforming proteins of small DNA tumor viruses. The E2F proteins contain several evolutionally conserved domains found in most members of the family. These domains include a DNA binding domain, a dimerization domain which determines interaction with the differentiation regulated transcription factor proteins (DP), a transactivation domain enriched in acidic amino acids, and a tumor suppressor protein association domain which is embedded within the transactivation domain. This protein and another 2 members, E2F2 and E2F3, have an additional cyclin binding domain. This protein binds preferentially to retinoblastoma protein pRB in a cell-cycle dependent manner. It can mediate both cell proliferation and p53-dependent/independent apoptosis. [provided by RefSeq, Jul 2008]

**Immunogen**

A synthetic peptide of human E2F1

**Gene ID**

1869

**Swiss Prot**

Q01094

**Synonyms**

RBP3; E2F-1; RBAP1; RBBP3

**Reactivity**

Human,Mouse,Rat

**Application**

WB, IP

**Recommended dilution**

WB: 1:1000-1:5000

IP: 1:10-1:100

**Calculated MW**

47 kDa

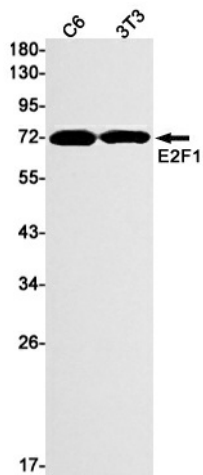
**Observed MW**

70 kDa

**Host species**

Rabbit

Clonality	Monoclonal
Clonality No.	DGR13759
Isotype	IgG
Purity	Affinity Purification
Conjugation	Un-conjugated
Storage Stability	Store at -20°C. Supplied in 50mM Tris-Glycine(pH 7.4), 0.15M NaCl, 40% Glycerol, 0.01% sodium azide and 0.05% BSA. Stable for 12 months from date of receipt.



Western blot detection of E2F1 in C6,3T3 cell lysates using E2F1 antibody(1:1000 diluted).