

Recombinant

DGRmAb®

## Phospho-IKB alpha (Ser32) (DGR13837) Rabbit mAb

db12153

Package : 10µL 20µL 50µL 100µL

**Product Name** : Phospho-IKB alpha (Ser32) (DGR13837) Rabbit mAb**Cat.No.:** db12153**Synonyms** : IKBA; MAD-3; NFKBI**Application** : WB, IP**Reactivity** : Human,Mouse,Rat**Host species** : Rabbit**Background**

This gene encodes a member of the NF-kappa-B inhibitor family, which contain multiple ankrin repeat domains. The encoded protein interacts with REL dimers to inhibit NF-kappa-B/REL complexes which are involved in inflammatory responses. The encoded protein moves between the cytoplasm and the nucleus via a nuclear localization signal and CRM1-mediated nuclear export. Mutations in this gene have been found in ectodermal dysplasia anhidrotic with T-cell immunodeficiency autosomal dominant disease. [provided by RefSeq, Aug 2011]

**Immunogen**

A synthetic phosphopeptide corresponding to residues surrounding Ser32 of human IKB alpha

**Gene ID**

4792

**Swiss Prot**

P25963

**Synonyms**

IKBA; MAD-3; NFKBI

**Reactivity**

Human,Mouse,Rat

**Application**

WB, IP

**Recommended dilution**

WB: 1:1000

IP: 1:20

**Calculated MW**

36 kDa

**Observed MW**

36 kDa

**Host species**

Rabbit

**Clonality**

Monoclonal

**Clonality No.**

DGR13837

**Isotype**

IgG

**Purity**

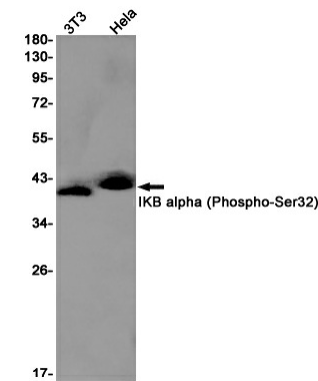
Affinity Purification

Conjugation

Un-conjugated

Storage Stability

Store at -20°C. Supplied in 50mM Tris-Glycine(pH 7.4), 0.15M NaCl, 40% Glycerol, 0.01% sodium azide and 0.05% BSA. Stable for 12 months from date of receipt.



Western blot detection of IKB alpha (Phospho-Ser32) in 3T3,HeLa cell lysates using IKB alpha (Phospho-Ser32) antibody(1:1000 diluted).