

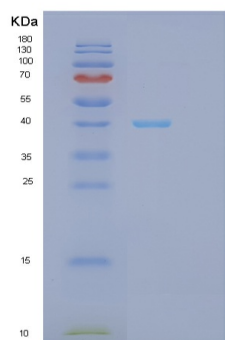
Recombinant Human GPD1L Protein

db52316

Package : 10µg 50µg 100µg 1mg

Product Name : Recombinant Human GPD1L Protein**Cat.No.:** db52316**Synonyms** : Glycerol-3-phosphate dehydrogenase 1-like protein, GPD1-L.**Application** : Positive Control, Immunogen, SDS-PAGE, WB**Tag** : N-6His**Expression host** : E.coli**Species** : Human

Gene ID	23171
Swiss Prot	Q8N335
Synonyms	Glycerol-3-phosphate dehydrogenase 1-like protein, GPD1-L.
Application	Positive Control, Immunogen, SDS-PAGE, WB
Molecular Weight	40.6 kDa (371aa), (SDS-PAGE under reducing conditions)
Species	Human
Purity	>85% as determined by SDS-PAGE.
Seq	1-351aa
Tag	N-6His
Concentration	1 mg/ml (determined by Bradford assay)
Formulation	Freeze-dried powder
Storage Stability	Store at 2-8°C for one month. Aliquot and store at -80°C for 12 months. Avoid repeated freeze/thaw cycles.



15% SDS PAGE(reduced) analysis of Recombinant Human GPD1L Protein