

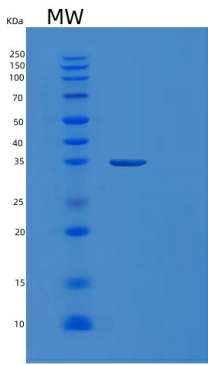
Recombinant Human MDH2 Protein

db52935

Package : 10µg 50µg 100µg 1mg

Product Name : Recombinant Human MDH2 Protein**Cat.No.:** db52935**Synonyms** : Malate dehydrogenase 2, NAD (mitochondrial), M-MDH, MDH, MOR1**Application** : Positive Control, Immunogen, SDS-PAGE, WB**Tag** : N-6His**Expression host** : E.coli**Species** : Human

Gene ID	4191
Swiss Prot	P40926
Synonyms	Malate dehydrogenase 2, NAD (mitochondrial), M-MDH, MDH, MOR1
Application	Positive Control, Immunogen, SDS-PAGE, WB
Molecular Weight	35.2 kDa(335aa), (SDS-PAGE under reducing conditions)
Species	Human
Purity	>90% as determined by SDS-PAGE.
Seq	25-338aa
Tag	N-6His
Concentration	1 mg/ml (determined by Bradford assay)
Formulation	Freeze-dried powder
Storage Stability	Store at 2-8°C for one month. Aliquot and store at -80°C for 12 months. Avoid repeated freeze/thaw cycles.



15% SDS PAGE(reduced) analysis of Recombinant Human MDH2 Protein