

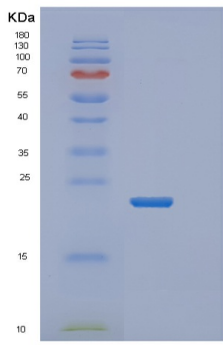
## Recombinant Human MRPL13 Protein

db53022

Package : 10µg 50µg 100µg 1mg

**Product Name** : Recombinant Human MRPL13 Protein**Cat.No.:** db53022**Synonyms** : Mitochondrial ribosomal protein L13, L13, L13A, L13mt, RPL13, RPML13**Application** : Positive Control, Immunogen, SDS-PAGE, WB**Tag** : N-6His**Expression host** : E.coli**Species** : Human

<b>Gene ID</b>	28998
<b>Swiss Prot</b>	Q9BYD1
<b>Synonyms</b>	Mitochondrial ribosomal protein L13, L13, L13A, L13mt, RPL13, RPML13
<b>Application</b>	Positive Control, Immunogen, SDS-PAGE, WB
<b>Molecular Weight</b>	23.1 kDa (201aa)
<b>Species</b>	Human
<b>Purity</b>	>90% as determined by SDS-PAGE.
<b>Seq</b>	1-178aa
<b>Tag</b>	N-6His
<b>Concentration</b>	1 mg/ml (determined by Bradford assay)
<b>Formulation</b>	Freeze-dried powder
<b>Storage Stability</b>	Store at 2-8°C for one month. Aliquot and store at -80°C for 12 months. Avoid repeated freeze/thaw cycles.



15% SDS PAGE(reduced) analysis of Recombinant Human MRPL13 Protein