

## Recombinant Human Neuron-Specific Enolase (NSE) Protein

db53147

Package : 10µg 50µg 100µg 1mg

**Product Name :** Recombinant Human Neuron-Specific Enolase (NSE) Protein

**Cat.No.:** db53147

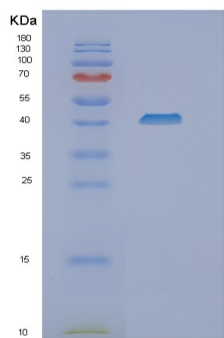
**Synonyms :** Enolase 2 (gamma, neuronal)

**Application :** Positive Control, Immunogen, SDS-PAGE, WB

**Expression host :** E.coli

**Species :** Human

<b>Gene ID</b>	2026
<b>Swiss Prot</b>	P09104
<b>Synonyms</b>	Enolase 2 (gamma, neuronal)
<b>Application</b>	Positive Control, Immunogen, SDS-PAGE, WB
<b>Molecular Weight</b>	47 kDa ( 434 aa)
<b>Species</b>	Human
<b>Purity</b>	>85% as determined by SDS-PAGE.
<b>Seq</b>	1-434aa
<b>Concentration</b>	1 mg/ml (determined by Bradford assay)
<b>Formulation</b>	Freeze-dried powder
<b>Storage Stability</b>	Store at 2-8°C for one month. Aliquot and store at -80°C for 12 months. Avoid repeated freeze/thaw cycles.



15% SDS PAGE(reduced) analysis of Recombinant Human Neuron-Specific Enolase (NSE) Protein