

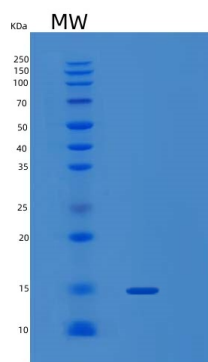
## Recombinant Human PEA-15 Protein

db53341

Package : 10µg 50µg 100µg 1mg

**Product Name** : Recombinant Human PEA-15 Protein**Cat.No.:** db53341**Synonyms** : Phosphoprotein enriched in astrocytes, 15kD, Astrocytic phosphoprotein PEA-15, PEA15, PED.**Application** : Positive Control, Immunogen, SDS-PAGE, WB**Expression host** : E.coli**Species** : Human

|                          |  |
|--------------------------|--|
| <b>Gene ID</b>           | 8682   |
| <b>Swiss Prot</b>        | Q15121   |
| <b>Synonyms</b>          | Phosphoprotein enriched in astrocytes, 15kD, Astrocytic phosphoprotein PEA-15, PEA15, PED.               |
| <b>Application</b>       | Positive Control, Immunogen, SDS-PAGE, WB  |
| <b>Molecular Weight</b>  | 15 kDa (130aa)   |
| <b>Species</b>           | Human  |
| <b>Purity</b>            | >95% as determined by SDS-PAGE.  |
| <b>Seq</b>               | 1-130aa  |
| <b>Concentration</b>     | 1 mg/ml (determined by Bradford assay)   |
| <b>Formulation</b>       | Freeze-dried powder  |
| <b>Storage Stability</b> | Store at 2-8℃ for one month. Aliquot and store at -80℃ for 12 months. Avoid repeated freeze/thaw cycles. |



15% SDS PAGE(reduced) analysis of Recombinant Human PEA-15 Protein