

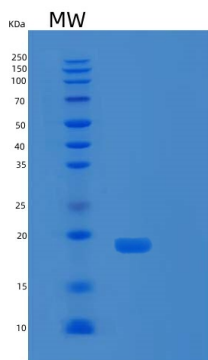
## Recombinant Human SCF (Stem Cell Factor) Protein

db53856

Package : 10µg 50µg 100µg 1mg

**Product Name** : Recombinant Human SCF (Stem Cell Factor) Protein**Cat.No.:** db53856**Synonyms** : Stem cell factor, KITLG, Kitl, KL-1, MGF, SF, SHEP7**Application** : Positive Control, Immunogen, SDS-PAGE, WB**Expression host** : E.coli**Species** : Human

Gene ID	4254
Swiss Prot	P21583
Synonyms	Stem cell factor, KITLG, Kitl, KL-1, MGF, SF, SHEP7
Application	Positive Control, Immunogen, SDS-PAGE, WB
Molecular Weight	18.5 kDa (165 aa)
Species	Human
Purity	>90% as determined by SDS-PAGE.
Seq	2-165aa
Concentration	1 mg/ml (determined by Bradford assay)
Formulation	Freeze-dried powder
Storage Stability	Store at 2-8℃ for one month. Aliquot and store at -80℃ for 12 months. Avoid repeated freeze/thaw cycles.



15% SDS PAGE(reduced) analysis of Recombinant Human SCF (Stem Cell Factor) Protein