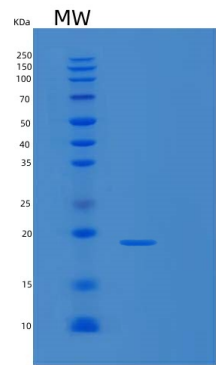


Recombinant Mouse SCF Protein

db53857Package : 10μg 50μg 100μg 1mg

Product Name : Recombinant Mouse SCF Protein
Cat.No.: db53857
Synonyms : Stem cell factor, Kitl, Clo, Con, contrasted, Gb, Kitlg, Mgf, SF, Sl, SLF, Steel
Application : Positive Control, Immunogen, SDS-PAGE, WB
Expression host : E.coli
Species : Mouse

Gene ID	17311
Swiss Prot	P20826
Synonyms	Stem cell factor, Kitl, Clo, Con, contrasted, Gb, Kitlg, Mgf, SF, Sl, SLF, Steel
Application	Positive Control, Immunogen, SDS-PAGE, WB
Molecular Weight	18 kDa (165 aa)
Species	Mouse
Purity	>85% as determined by SDS-PAGE.
Seq	26-189aa
Concentration	1 mg/ml (determined by Bradford assay)
Formulation	Freeze-dried powder
Storage Stability	Store at 2-8℃ for one month. Aliquot and store at -80℃ for 12 months. Avoid repeated freeze/thaw cycles.



15% SDS PAGE(reduced) analysis of Recombinant Mouse SCF Protein