

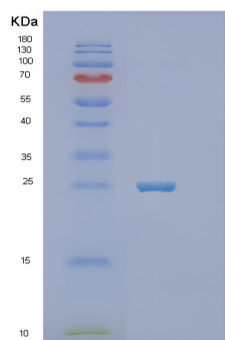
Recombinant Human SLAMF6 Protein

db53959

Package : 10µg 50µg 100µg 1mg

Product Name : Recombinant Human SLAMF6 Protein**Cat.No.:** db53959**Synonyms** : SLAM family member 6, CD352, KALI, KAL1b, Ly108, NTB-A, NTBA, SF2000**Application** : Positive Control, Immunogen, SDS-PAGE, WB**Tag** : N-6His**Expression host** : E.coli**Species** : Human

Gene ID	114836
Swiss Prot	Q96DU3
Synonyms	SLAM family member 6, CD352, KALI, KAL1b, Ly108, NTB-A, NTBA, SF2000
Application	Positive Control, Immunogen, SDS-PAGE, WB
Molecular Weight	25.5 kDa (228aa)
Species	Human
Purity	>85% as determined by SDS-PAGE.
Seq	22-226aa
Tag	N-6His
Concentration	1 mg/ml (determined by Bradford assay)
Formulation	Freeze-dried powder
Storage Stability	Store at 2-8°C for one month. Aliquot and store at -80°C for 12 months. Avoid repeated freeze/thaw cycles.



15% SDS PAGE(reduced) analysis of Recombinant Human SLAMF6 Protein