

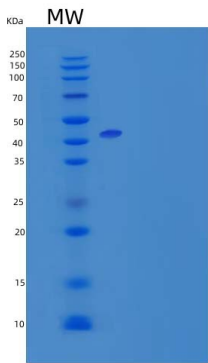
Recombinant Mouse Leukocyte Mono Ig-Like Receptor 1/LMIR1/CD300a Protein(C-Fc)

db54828

Package : 10µg 50µg 100µg 1mg

Product Name : Recombinant Mouse Leukocyte Mono Ig-Like Receptor 1/LMIR1/CD300a Protein(C-Fc)**Cat.No.:** db54828**Synonyms** : CD300a;CD300a antigen;CMRF35H9; CD300a molecule; leukocyte immunoglobulin-like receptor;CD300 antigen-like family member A; CMRF35-like molecule 8;NK inhibitory receptor; Immunoglobulin superfamily member 12; IRp60;Inhibitory receptor protein 60; CLM8; CM**Application** : Positive Control, Immunogen, SDS-PAGE, WB**Tag** : C-Fc**Expression host** : HEK293 Cells**Species** : Mouse

Gene ID	217303
Swiss Prot	Q6SJQ0
Synonyms	CD300a;CD300a antigen;CMRF35H9; CD300a molecule; leukocyte immunoglobulin-like receptor;CD300 antigen-like family member A; CMRF35-like molecule 8;NK inhibitory receptor; Immunoglobulin superfamily member 12; IRp60;Inhibitory receptor protein 60; CLM8; CM
Application	Positive Control, Immunogen, SDS-PAGE, WB
Molecular Weight	44.3 kDa
Species	Mouse
Purity	>90% as determined by SDS-PAGE.
Seq	Leu28-Arg183
Tag	C-Fc
Formulation	Freeze-dried powder
Storage Stability	Store at 2-8°C for one month. Aliquot and store at -80°C for 12 months. Avoid repeated freeze/thaw cycles.



15% SDS PAGE(reduced) analysis of Recombinant Mouse Leukocyte Mono Ig-Like Receptor 1/LMIR1/CD300a Protein(C-Fc)