

## Recombinant Human CMRF35-Like Molecule 9 Protein

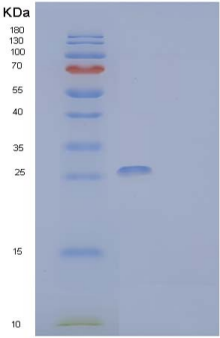
db54930

Package : 10µg 50µg 100µg 1mg

**Product Name** : Recombinant Human CMRF35-Like Molecule 9 Protein**Cat.No.:** db54930**Synonyms** : CMRF35-Like Molecule 9; CLM-9; CD300 Antigen-Like Family Member G; Triggering Receptor  
Expressed on Myeloid Cells 4; TREM-4; CD300g; CD300LG; CLM9; TREM4**Application** : Positive Control, Immunogen, SDS-PAGE, WB**Tag** : C-6His**Expression host** : HEK293 Cells**Species** : Human

<b>Gene ID</b>	146894
<b>Swiss Prot</b>	Q6UXG3
<b>Synonyms</b>	CMRF35-Like Molecule 9; CLM-9; CD300 Antigen-Like Family Member G; Triggering Receptor Expressed on Myeloid Cells 4; TREM-4; CD300g; CD300LG; CLM9; TREM4
<b>Application</b>	Positive Control, Immunogen, SDS-PAGE, WB
<b>Molecular Weight</b>	25.8 kDa
<b>Species</b>	Human
<b>Purity</b>	>90% as determined by SDS-PAGE.
<b>Seq</b>	Leu19-Arg247
<b>Tag</b>	C-6His
<b>Formulation</b>	Freeze-dried powder
<b>Storage Stability</b>	Store at 2-8°C for one month. Aliquot and store at -80°C for 12 months. Avoid repeated freeze/thaw cycles.





15% SDS PAGE(reduced) analysis of Recombinant Human CMRF35-Like Molecule 9 Protein