

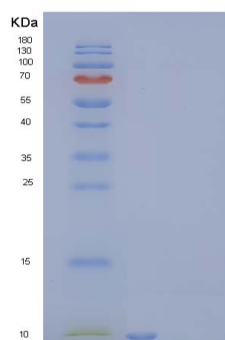
Recombinant Human Insulin-Like Growth Factor II/IGF2 Protein

db54933

Package : 10µg 50µg 100µg 1mg

Product Name : Recombinant Human Insulin-Like Growth Factor II/IGF2 Protein**Cat.No.:** db54933**Synonyms** : Insulin-Like Growth Factor II; IGF-II; Somatomedin-A; IGF2; PP1446**Application** : Positive Control, Immunogen, SDS-PAGE, WB**Expression host** : E.coli**Species** : Human

Gene ID	3481
Swiss Prot	P01344
Synonyms	Insulin-Like Growth Factor II; IGF-II; Somatomedin-A; IGF2; PP1446
Application	Positive Control, Immunogen, SDS-PAGE, WB
Molecular Weight	8.9 kDa
Species	Human
Purity	>90% as determined by SDS-PAGE.
Seq	Ala25-Glu91
Formulation	Freeze-dried powder
Storage Stability	Store at 2-8°C for one month. Aliquot and store at -80°C for 12 months. Avoid repeated freeze/thaw cycles.



15% SDS PAGE(reduced) analysis of Recombinant Human Insulin-Like Growth Factor II/IGF2 Protein