

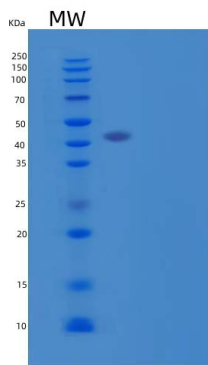
Recombinant Human Leukocyte Mono Ig-Like Receptor 1/LMIR1/CD300a Protein(C-Fc-6His)

db55159

Package : 10µg 50µg 100µg 1mg

Product Name : Recombinant Human Leukocyte Mono Ig-Like Receptor 1/LMIR1/CD300a Protein(C-Fc-6His)**Cat.No.:** db55159**Synonyms** : CMRF35-like molecule 8; CD300 antigen-like family member A; CMRF-35-H9; CMRF35-H; IRC1/IRC2; Immunoglobulin superfamily member 12; Inhibitory receptor protein 60; NK inhibitory receptor**Application** : Positive Control, Immunogen, SDS-PAGE, WB**Tag** : C-Fc-6His**Expression host** : HEK293 Cells**Species** : Human

Gene ID	11314
Swiss Prot	Q9UGN4
Synonyms	CMRF35-like molecule 8; CD300 antigen-like family member A; CMRF-35-H9; CMRF35-H; IRC1/IRC2; Immunoglobulin superfamily member 12; Inhibitory receptor protein 60; NK inhibitory receptor
Application	Positive Control, Immunogen, SDS-PAGE, WB
Molecular Weight	45.4 kDa
Species	Human
Purity	>85% as determined by SDS-PAGE.
Seq	Leu18-Gln178
Tag	C-Fc-6His
Formulation	Freeze-dried powder
Storage Stability	Store at 2-8°C for one month. Aliquot and store at -80°C for 12 months. Avoid repeated freeze/thaw cycles.



15% SDS PAGE(reduced) analysis of Recombinant Human Leukocyte Mono Ig-Like Receptor 1/LMIR1/CD300a Protein(C-Fc-6His)