

Recombinant Human Leukocyte Mono Ig-Like Receptor 1/LMIR1/CD300a Protein(C-6His)

db55469

Package : 10µg 50µg 100µg 1mg

Product Name : Recombinant Human Leukocyte Mono Ig-Like Receptor 1/LMIR1/CD300a Protein(C-6His)

Cat.No.: db55469

Synonyms : CMRF35-Like Molecule 8; CLM-8; CD300 Antigen-Like Family Member A; CMRF-35-H9; CMRF35-H9; CMRF35-H; IRC1/IRC2; Immunoglobulin Superfamily Member 12; IgSF12; Inhibitory Receptor Protein 60; IRp60; NK Inhibitory Receptor; CD300a; CD300A; CMRF35H; IGSF12

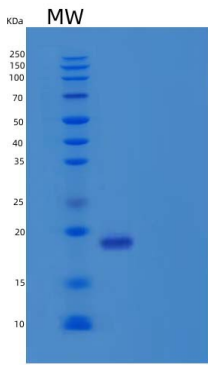
Application : Positive Control, Immunogen, SDS-PAGE, WB

Tag : C-6His

Expression host : HEK293 Cells

Species : Human

Gene ID	11314
Swiss Prot	Q9UGN4
Synonyms	CMRF35-Like Molecule 8; CLM-8; CD300 Antigen-Like Family Member A; CMRF-35-H9; CMRF35-H9; CMRF35-H; IRC1/IRC2; Immunoglobulin Superfamily Member 12; IgSF12; Inhibitory Receptor Protein 60; IRp60; NK Inhibitory Receptor; CD300a; CD300A; CMRF35H; IGSF12
Application	Positive Control, Immunogen, SDS-PAGE, WB
Molecular Weight	18.5 kDa
Species	Human
Purity	>95% as determined by SDS-PAGE.
Seq	Leu18-Gln178
Tag	C-6His
Formulation	Freeze-dried powder
Storage Stability	Store at 2-8°C for one month. Aliquot and store at -80°C for 12 months. Avoid repeated freeze/thaw cycles.



15% SDS PAGE(reduced) analysis of Recombinant Human Leukocyte Mono Ig-Like Receptor 1/LMIR1/CD300a Protein(C-6His)