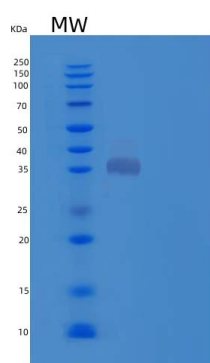


Recombinant Mouse Cathepsin L Protein

db55723

Package : 10μg 50μg 100μg 1mg

Product Name : Recombinant Mouse Cathepsin L Protein**Cat.No.:** db55723**Synonyms** : Cathepsin L1; Major excreted protein; p39 cysteine proteinase; Ctsl1;**Application** : Positive Control, Immunogen, SDS-PAGE, WB**Tag** : C-6His**Expression host** : HEK293 Cells**Species** : Mouse**Gene ID** 13039**Swiss Prot** P06797**Synonyms** Cathepsin L1; Major excreted protein; p39 cysteine proteinase; Ctsl1;**Application** Positive Control, Immunogen, SDS-PAGE, WB**Molecular Weight** 36.8 kDa**Species** Mouse**Purity** >85% as determined by SDS-PAGE.**Seq** Thr18-Asn334**Tag** C-6His**Formulation** Freeze-dried powder**Storage Stability** Store at 2-8℃ for one month. Aliquot and store at -80℃ for 12 months. Avoid repeated freeze/thaw cycles.

15% SDS PAGE(reduced) analysis of Recombinant Mouse Cathepsin L Protein

