

**Recombinant Human Cadherin-17/LI-Cadherin/CDH17 Protein(C-6His)**

db56083

Package : 10µg 50µg 100µg 1mg

**Product Name** : Recombinant Human Cadherin-17/LI-Cadherin/CDH17 Protein(C-6His)**Cat.No.:** db56083**Synonyms** : Cadherin-17; Intestinal Peptide-Associated Transporter HPT-1; Liver-Intestine Cadherin; LI-Cadherin; CDH17**Application** : Positive Control, Immunogen, SDS-PAGE, WB**Tag** : C-6His**Expression host** : HEK293 Cells**Species** : Human**Background**

Cadherins are calcium-dependent cell adhesion proteins. They preferentially interact with themselves in a homophilic manner in connecting cells; cadherins may thus contribute to the sorting of heterogeneous cell types. LI-cadherin may have a role in the morphological organization of liver and intestine. Involved in intestinal peptide transport.

**Gene ID**

1015

**Swiss Prot**

Q12864

**Synonyms**

Cadherin-17; Intestinal Peptide-Associated Transporter HPT-1; Liver-Intestine Cadherin; LI-Cadherin; CDH17

**Application**

Positive Control, Immunogen, SDS-PAGE, WB

**Molecular Weight**

86.0 kDa

**Species**

Human

**Purity**

&gt;85% as determined by SDS-PAGE.

**Seq**

Gln23-Met787

**Tag**

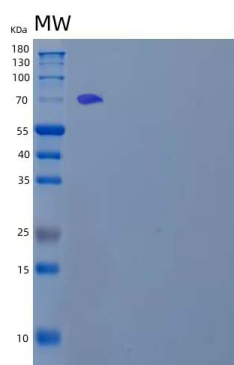
C-6His

**Formulation**

Freeze-dried powder

**Storage Stability**

Store at 2-8°C for one month. Aliquot and store at -80°C for 12 months. Avoid repeated freeze/thaw cycles.



15% SDS PAGE(reduced) analysis of Recombinant Human Cadherin-17/LI-Cadherin/CDH17 Protein(C-6His)