

## Recombinant Human BCL2L1 / Bcl-XL Protein (His tag)

db56280

Package : 10µg 50µg 100µg 1mg

**Product Name :** Recombinant Human BCL2L1 / Bcl-XL Protein (His tag)

**Cat.No.:** db56280

**Synonyms :** Bcl-X;bcl-xL;BCL-XL/S;bcl-xS;BCL2L1;BCLX;BCLXL;BCLXS;PPP1R52

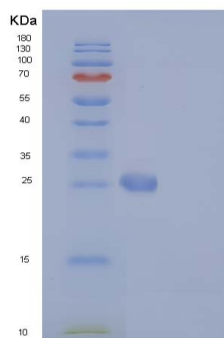
**Application :** Positive Control, Immunogen, SDS-PAGE, WB

**Tag :** C-His

**Expression host :** E.coli

**Species :** Human

<b>Gene ID</b>	598
<b>Swiss Prot</b>	Q07817
<b>Synonyms</b>	Bcl-X;bcl-xL;BCL-XL/S;bcl-xS;BCL2L1;BCLX;BCLXL;BCLXS;PPP1R52
<b>Application</b>	Positive Control, Immunogen, SDS-PAGE, WB
<b>Molecular Weight</b>	25.2 kDa
<b>Species</b>	Human
<b>Purity</b>	>90% as determined by SDS-PAGE.
<b>Seq</b>	Met 1-Arg 212
<b>Tag</b>	C-His
<b>Formulation</b>	Freeze-dried powder
<b>Storage Stability</b>	Store at 2-8°C for one month. Aliquot and store at -80°C for 12 months. Avoid repeated freeze/thaw cycles.



15% SDS PAGE(reduced) analysis of Recombinant Human BCL2L1 / Bcl-XL Protein (His tag)

