

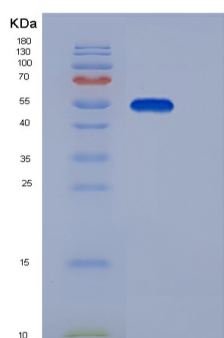
Recombinant Human EDEM2 / C20orf31 Protein (His tag)

db56777

Package : 10µg 50µg 100µg 1mg

Product Name : Recombinant Human EDEM2 / C20orf31 Protein (His tag)**Cat.No.:** db56777**Synonyms** : bA4204.1;C20orf31;C20orf49;UNQ573/PRO1135**Application** : Positive Control, Immunogen, SDS-PAGE, WB**Tag** : C-His**Expression host** : HEK293 Cells**Species** : Human

Gene ID	55741
Swiss Prot	Q9BV94
Synonyms	bA4204.1;C20orf31;C20orf49;UNQ573/PRO1135
Application	Positive Control, Immunogen, SDS-PAGE, WB
Molecular Weight	54 kDa
Species	Human
Purity	>95% as determined by SDS-PAGE.
Seq	Met 1-Lys492
Tag	C-His
Formulation	Freeze-dried powder
Storage Stability	Store at 2-8°C for one month. Aliquot and store at -80°C for 12 months. Avoid repeated freeze/thaw cycles.



15% SDS PAGE(reduced) analysis of Recombinant Human EDEM2 / C20orf31 Protein (His tag)

