

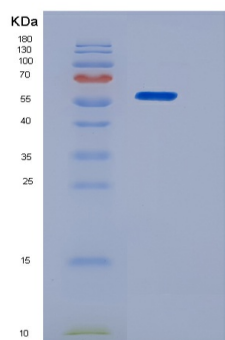
Recombinant Human Siglec-2 / CD22 Protein (aa 176-687, His tag)

db58323

Package : 10µg 50µg 100µg 1mg

Product Name : Recombinant Human Siglec-2 / CD22 Protein (aa 176-687, His tag)**Cat.No.:** db58323**Synonyms** : SIGLEC-2;SIGLEC2**Application** : Positive Control, Immunogen, SDS-PAGE, WB**Tag** : C-His**Expression host** : HEK293 Cells**Species** : Human

Background	Mediates B-cell B-cell interactions. May be involved in the localization of B-cells in lymphoid tissues. Binds sialylated glycoproteins; one of which is CD45. Preferentially binds to alpha-2,6-linked sialic acid.
Gene ID	933
Swiss Prot	P20273
Synonyms	SIGLEC-2;SIGLEC2
Application	Positive Control, Immunogen, SDS-PAGE, WB
Molecular Weight	58.5 kDa
Species	Human
Purity	>90% as determined by SDS-PAGE.
Seq	Trp176-Arg687
Tag	C-His
Formulation	Freeze-dried powder
Storage Stability	Store at 2-8°C for one month. Aliquot and store at -80°C for 12 months. Avoid repeated freeze/thaw cycles.



15% SDS PAGE(reduced) analysis of Recombinant Human Siglec-2 / CD22 Protein (aa 176-687, His tag)