

Recombinant Human 14-3-3 epsilon / YWHAE Protein

db57742

Package : 10µg 50µg 100µg 1mg

Product Name : Recombinant Human 14-3-3 epsilon / YWHAE Protein

Cat.No.: db57742

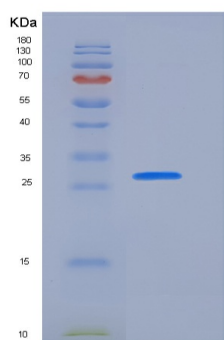
Synonyms : 14-3-3E;HEL2;KCIP-1;MDCR;MDS

Application : Positive Control, Immunogen, SDS-PAGE, WB

Expression host : E.coli

Species : Human

Gene ID	7531
Swiss Prot	P62258
Synonyms	14-3-3E;HEL2;KCIP-1;MDCR;MDS
Application	Positive Control, Immunogen, SDS-PAGE, WB
Molecular Weight	29.4 kDa
Species	Human
Purity	>85% as determined by SDS-PAGE.
Seq	Met 1-Gln 255
Formulation	Freeze-dried powder
Storage Stability	Store at 2-8°C for one month. Aliquot and store at -80°C for 12 months. Avoid repeated freeze/thaw cycles.



15% SDS PAGE(reduced) analysis of Recombinant Human 14-3-3 epsilon / YWHAE Protein