

Recombinant

DGRmAb®

LC3B (DGR11871) Rabbit mAb

db15555

Package : 10µL 20µL 50µL 100µL

Product Name : LC3B (DGR11871) Rabbit mAb**Cat.No.:** db15555**Synonyms** : LC3B; ATG8F; MAP1LC3B-a; MAP1A/1BLC3**Application** : WB, IHC, ICC/IF**Reactivity** : Human, Mouse, Rat, Pig**Host species** : Rabbit**Background**

The product of this gene is a subunit of neuronal microtubule-associated MAP1A and MAP1B proteins, which are involved in microtubule assembly and important for neurogenesis. Studies on the rat homolog implicate a role for this gene in autophagy, a process that involves the bulk degradation of cytoplasmic component. [provided by RefSeq, Jul 2008]

Immunogen

A synthetic peptide of human LC3B

Gene ID

81631, 67443, 64862

Swiss Prot

Q9GZQ8, Q9CQV6, Q62625

Synonyms

LC3B; ATG8F; MAP1LC3B-a; MAP1A/1BLC3

Reactivity

Human, Mouse, Rat, Pig

Application

WB, IHC, ICC/IF

Recommended dilution

WB: 1:1000-1:5000

IHC: 1:500-1:2000

ICC/IF: 1:1000

Calculated MW

15 kDa

Observed MW

14,16 kDa

Host species

Rabbit

Clonality

Monoclonal

Clonality No.

DGR11871

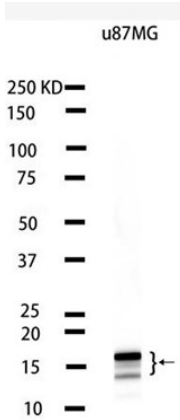
Isotype

IgG

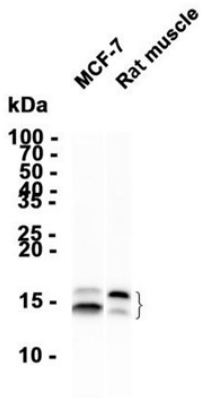
Purity

Affinity Purification

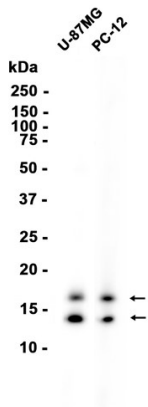
Conjugation	Un-conjugated
Storage Stability	Store at -20°C. Supplied in 50mM Tris-Glycine(pH 7.4), 0.15M NaCl, 40% Glycerol, 0.01% sodium azide and 0.05% BSA. Stable for 12 months from date of receipt.



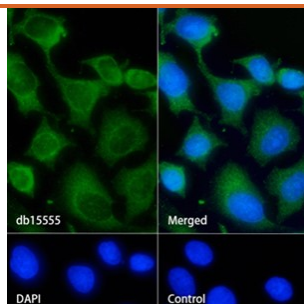
Western blot analysis of extracts from U-87 MG cells using db15555 at 1:1000.



Western blot analysis of extracts from MCF-7 cells and Rat muscle tissue using db15555 at 1:4000.



Western blot analysis of extracts from U-87 MG, PC-12 cells using db15555 at 1:1000.



Immunofluorescence analysis of HeLa cells labelling LC3B with db15555.

The cells were fixed with cold 100% methanol (10min, 4°C) and blocked in 1% BSA/10% normal goat serum/0.3M glycine in 0.1% PBS-Tween 20 for 1h. The cells were then incubate with db15555 (1:500) at room temprature for 1h, followed by a further incubation at room temperature for 45min with Goat Anti Rabbit IgG (H+L)-AF488 (db10005, shown in green). Nuclear DNA was labeled in blue with DAPI.

Control: Secondary antibody only.