

Recombinant

DGRmAb®

PAR2 (DGR14177) Rabbit mAb

db15398

Package : 10µL 20µL 50µL 100µL

Product Name : PAR2 (DGR14177) Rabbit mAb**Cat.No.:** db15398**Synonyms :** PAR2; GPR11**Application :** WB, IHC-P, ICC/IF, FC**Reactivity :** Human,Mouse,Rat**Host species :** Rabbit**Background**

This gene encodes a member of the G-protein coupled receptor 1 family of proteins. The encoded cell surface receptor is activated through proteolytic cleavage of its extracellular amino terminus, resulting in a new amino terminus that acts as a tethered ligand that binds to an extracellular loop domain. Activation of the receptor has been shown to stimulate vascular smooth muscle relaxation, dilate blood vessels, increase blood flow, and lower blood pressure. This protein is also important in the inflammatory response, as well as innate and adaptive immunity. [provided by RefSeq, Jun 2016]

Immunogen

A synthetic peptide of human PAR2

Gene ID

2150, 14063, 116677

Swiss Prot

P55085, P55086, Q63645

Synonyms

PAR2; GPR11

Reactivity

Human,Mouse,Rat

Application

WB, IHC-P, ICC/IF, FC

Recommended dilution

WB: 1:1000-1:5000

IHC-P: 1:100

ICC/IF: 1:50

FC: 1:200-1:500

Calculated MW

44 kDa

Observed MW

55 kDa

Host species

Rabbit

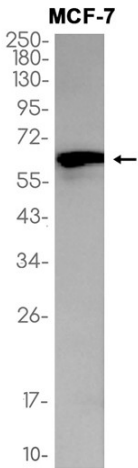
Clonality

Monoclonal

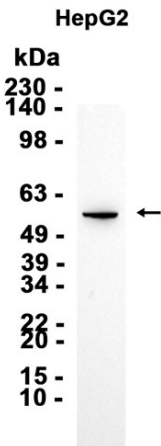
Clonality No.

DGR14177

Isotype	IgG
Purity	Affinity Purification
Conjugation	Un-conjugated
Storage Stability	Store at -20°C. Supplied in 50mM Tris-Glycine(pH 7.4), 0.15M NaCl, 40% Glycerol, 0.01% sodium azide and 0.05% BSA. Stable for 12 months from date of receipt.



Western blot analysis of extracts from MCF-7 cells using db15398 at 1:1000.



Western blot analysis of extracts from HepG2 cells using db15398 at 1:1000.