

Recombinant

DGRmAb®

BDNF (DGR13685) Rabbit mAb

db15513

Package : 10µL 20µL 50µL 100µL

Product Name : BDNF (DGR13685) Rabbit mAb**Cat.No.:** db15513**Synonyms** : ANON2; BULN2**Application** : WB, IHC-P, ICC/IF, FC**Reactivity** : Human,Mouse,Rat**Host species** : Rabbit**Background**

This gene encodes a member of the nerve growth factor family of proteins. Alternative splicing results in multiple transcript variants, at least one of which encodes a preproprotein that is proteolytically processed to generate the mature protein. Binding of this protein to its cognate receptor promotes neuronal survival in the adult brain. Expression of this gene is reduced in Alzheimer's, Parkinson's, and Huntington's disease patients. This gene may play a role in the regulation of the stress response and in the biology of mood disorders. [provided by RefSeq, Nov 2015]

Immunogen

A synthetic peptide of human BDNF

Gene ID

627, 12064, 24225

Swiss Prot

P23560, P21237, P23363

Synonyms

ANON2; BULN2

Reactivity

Human,Mouse,Rat

Application

WB, IHC-P, ICC/IF, FC

Recommended dilutionWB: 1:1000
IHC-P: 1:200-1:500
ICC/IF: 1:200-1:500
FC: 1:20**Calculated MW**

15 kDa

Observed MW

Precursor 28 kDa - Mature 14 kDa

Host species

Rabbit

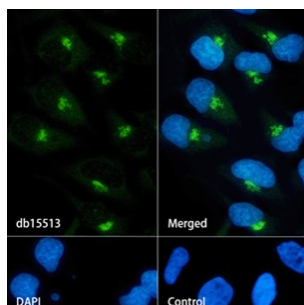
Clonality

Monoclonal

Clonality No.

DGR13685

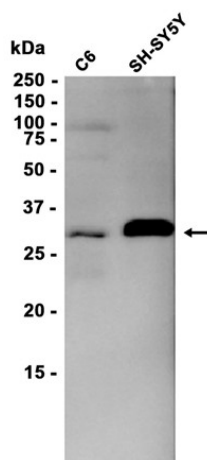
Isotype	IgG
Purity	Affinity Purification
Conjugation	Un-conjugated
Storage Stability	Store at -20°C. Supplied in 50mM Tris-Glycine(pH 7.4), 0.15M NaCl, 40% Glycerol, 0.01% sodium azide and 0.05% BSA. Stable for 12 months from date of receipt.



Immunofluorescence analysis of HeLa cells labelling BDNF with db15513.

The cells were fixed with cold 100% methanol (10min, 4°C) and blocked in 1% BSA/10% normal goat serum/0.3M glycine in 0.1% PBS-Tween 20 for 1h. The cells were then incubate with db15513 (1:500) at room temperature for 1h, followed by a further incubation at room temperature for 45min with Goat Anti Rabbit IgG (H+L)-AF488 (db10005, shown in green). Nuclear DNA was labeled in blue with DAPI.

Control: Secondary antibody only.



Western blot analysis of extracts from C6, SH-SY5Y cells using db15513 at 1:1000.