

Recombinant

DGRmAb®

**LAMP1 (DGR15502) Rabbit mAb**

db15048

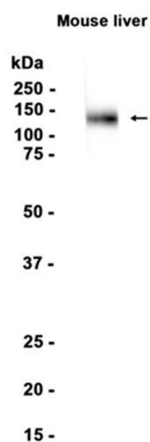
Package : 10µL 20µL 50µL 100µL

**Product Name** : LAMP1 (DGR15502) Rabbit mAb**Cat.No.:** db15048**Synonyms** : P2B; Perk; LGP-A; CD107a; Lamp-1; LGP-120**Application** : WB, IHC-P, ICC/IF, FC, IP**Reactivity** : Mouse**Host species** : Rabbit

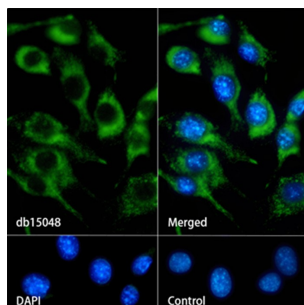
<b>Background</b>	Presents carbohydrate ligands to selectins. Also implicated in tumor cell metastasis.
<b>Immunogen</b>	Recombinant protein of mouse LAMP1
<b>Gene ID</b>	16783
<b>Swiss Prot</b>	P11438
<b>Synonyms</b>	P2B; Perk; LGP-A; CD107a; Lamp-1; LGP-120
<b>Reactivity</b>	Mouse
<b>Application</b>	WB, IHC-P, ICC/IF, FC, IP
<b>Recommended dilution</b>	WB: 1:1000 IHC-P: 1:200-1:500 ICC/IF: 1:100 FC: 1:200-1:500 IP: 1:20-1:50
<b>Calculated MW</b>	44 kDa
<b>Observed MW</b>	90-120 kDa
<b>Host species</b>	Rabbit
<b>Clonality</b>	Monoclonal
<b>Clonality No.</b>	DGR15502
<b>Isotype</b>	IgG
<b>Purity</b>	Affinity Purification
<b>Conjugation</b>	Un-conjugated

**Storage Stability**

Store at -20°C. Supplied in 50mM Tris-Glycine(pH 7.4), 0.15M NaCl, 40% Glycerol, 0.01% sodium azide and 0.05% BSA. Stable for 12 months from date of receipt.



Western blot analysis of extracts from Mouse liver tissue using db15048 at 1:1000.



Immunofluorescence analysis of 3T3 cells labelling LAMP1 with db15048.

The cells were fixed with cold 100% methanol (10min, 4°C) and blocked in 1% BSA/10% normal goat serum/0.3M glycine in 0.1% PBS-Tween 20 for 1h. The cells were then incubate with db15048 (1:100) at room temprature for 1h, followed by a further incubation at room temperature for 45min with Goat Anti Rabbit IgG (H+L)-AF488 ([db10005](#), shown in green). Nuclear DNA was labeled in blue with DAPI.

Control: Secondary antibody only.