

Recombinant

DGRmAb®

PI3-Kinase p85 beta (DGR15412) Rabbit mAb

db15064

Package : 10µL 20µL 50µL 100µL

Product Name : PI3-Kinase p85 beta (DGR15412) Rabbit mAb

Cat.No.: db15064

Synonyms : p85; MPPH; P85B; MPPH1; p85-BETA

Application : WB, IHC-P, ICC/IF, IP

Reactivity : Human,Rat

Host species : Rabbit

Background

Phosphatidylinositol 3-kinase (PI3K) is a lipid kinase that phosphorylates phosphatidylinositol and similar compounds, creating second messengers important in growth signaling pathways. PI3K functions as a heterodimer of a regulatory and a catalytic subunit. The protein encoded by this gene is a regulatory component of PI3K. Two transcript variants, one protein coding and the other non-protein coding, have been found for this gene. [provided by RefSeq, Dec 2012]

Immunogen

A synthetic peptide of human PI 3 Kinase p85 beta

Gene ID

5296, 29741

Swiss Prot

O00459, Q63788

Synonyms

p85; MPPH; P85B; MPPH1; p85-BETA

Reactivity

Human,Rat

Application

WB, IHC-P, ICC/IF, IP

Recommended dilution

WB: 1:1000
 IHC-P: 1:100
 ICC/IF: 1:200-1:500
 IP: 1:50-1:100

Calculated MW

82 kDa

Observed MW

85 kDa

Host species

Rabbit

Clonality

Monoclonal

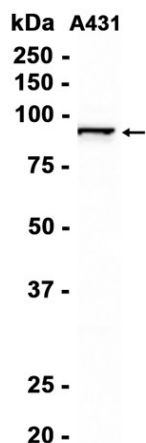
Clonality No.

DGR15412

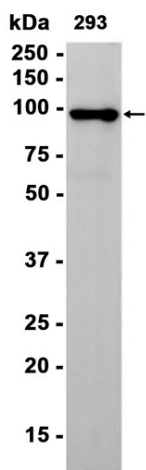
Isotype

IgG

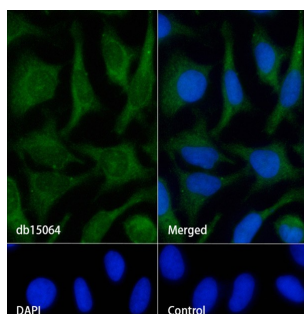
Purity	Affinity Purification
Conjugation	Un-conjugated
Storage Stability	Store at -20°C. Supplied in 50mM Tris-Glycine(pH 7.4), 0.15M NaCl, 40% Glycerol, 0.01% sodium azide and 0.05% BSA. Stable for 12 months from date of receipt.



Western blot analysis of extracts from A431 cells using db15064 at 1:1000.



Western blot analysis of extracts from 293 cells using db15064 at 1:1000.



Immunofluorescence analysis of HeLa cells labelling PI3-Kinase p85 beta with db15064.

The cells were fixed with cold 100% methanol (10min, 4°C) and blocked in 1% BSA/10% normal goat serum/0.3M glycine in 0.1% PBS-Tween 20 for 1h. The cells were then incubate with db15064 (1:200) at room temprature for 1h, followed by a further incubation at room temperature for 45min with Goat Anti Rabbit IgG (H+L)-AF488 (db10005, shown in green). Nuclear DNA was labeled in blue with DAPI.

Control: Secondary antibody only.