

Recombinant

DGRmAb®

## pan Cadherin (DGR18716) Rabbit mAb

db12881

Package : 10µL 20µL 50µL 100µL

**Product Name** : pan Cadherin (DGR18716) Rabbit mAb**Cat.No.:** db12881**Synonyms** : CDHP; HJMD; PCAD**Application** : WB, IHC-P, ICC/IF**Reactivity** : Human**Host species** : Rabbit**Background**

This gene encodes a classical cadherin of the cadherin superfamily. Alternative splicing results in multiple transcript variants, at least one of which encodes a preproprotein that is proteolytically processed to generate the mature glycoprotein. This calcium-dependent cell-cell adhesion protein is comprised of five extracellular cadherin repeats, a transmembrane region and a highly conserved cytoplasmic tail. This gene is located in a gene cluster in a region on the long arm of chromosome 16 that is involved in loss of heterozygosity events in breast and prostate cancer. In addition, aberrant expression of this protein is observed in cervical adenocarcinomas. Mutations in this gene are associated with hypotrichosis with juvenile macular dystrophy and ectodermal dysplasia, ectrodactyly, and macular dystrophy syndrome (EEMS). [provided by RefSeq, Nov 2015]

**Immunogen**

Recombinant protein of human P cadherin

**Gene ID**

1001

**Swiss Prot**

P22223

**Synonyms**

CDHP; HJMD; PCAD

**Reactivity**

Human

**Application**

WB, IHC-P, ICC/IF

**Recommended dilution**WB: 1:1000  
IHC-P: 1:100-1:200  
ICC/IF: 1:50**Calculated MW**

91 kDa

**Observed MW**

120 kDa

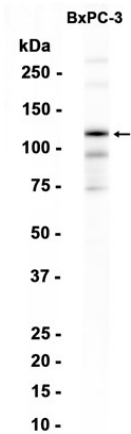
**Host species**

Rabbit

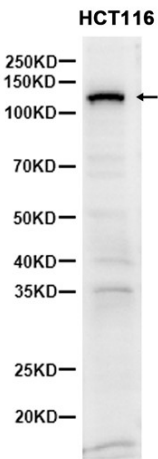
**Clonality**

Monoclonal

Clonality No.	DGR18716
Isotype	IgG
Purity	Affinity Purification
Conjugation	Un-conjugated
Storage Stability	Store at -20°C. Supplied in 50mM Tris-Glycine(pH 7.4), 0.15M NaCl, 40% Glycerol, 0.01% sodium azide and 0.05% BSA. Stable for 12 months from date of receipt.



Western blot analysis of extracts from BxPC-3 cells using db12881 at 1:1000.



Western blot analysis of extracts from HCT116 cells using db12881 at 1:1000.