

Recombinant

DGRmAb®

## His Tag (DGR14407) Rabbit mAb

db11052

Package : 10µL 20µL 100µL 500µL 1mL

**Product Name :** His Tag (DGR14407) Rabbit mAb**Cat.No.:** db11052**Application :** WB, IHC-P, ICC/IF, FC, IP**Reactivity :** Transfected**Host species :** Rabbit**Background**

Protein tags are protein or peptide sequences located either on the C- or N- terminal of the target protein, which facilitates one or several of the following characteristics: solubility, detection, purification, localization and expression. His tag is often used for affinity purification and binding assays. Expressed His tagged proteins can be purified and detected easily because the string of histidine residues binds to several types of immobilized metal ions, including nickel, cobalt and copper, under specific buffer conditions. The His tag antibody is a useful tool for monitoring of the His-tagged proteins, and recognizes His-tags placed at N-terminal, C-terminal, and internal regions of fusion proteins expressed in bacteria, insect, and mammalian cells.

**Immunogen**

A synthetic peptide of His tag

**Reactivity**

Transfected

**Application**

WB, IHC-P, ICC/IF, FC, IP

**Recommended dilution**WB: 1:1000-1:5000  
IHC-P: 1:1000-1:10000  
ICC/IF: 1:100  
FC: 1:200-1:500  
IP: 1:20-1:50**Calculated MW**

1 kDa

**Observed MW**

According to the fused protein

**Host species**

Rabbit

**Clonality**

Monoclonal

**Clonality No.**

DGR14407

**Isotype**

IgG

**Purity**

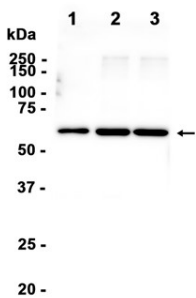
Affinity Purification

Conjugation

Un-conjugated

Storage Stability

Store at -20°C. Supplied in 50mM Tris-Glycine(pH 7.4), 0.15M NaCl, 40% Glycerol, 0.01% sodium azide and 0.05% BSA. Stable for 12 months from date of receipt.



1.Multi-tag Protein  
2.Multi-tag Protein in 293  
3.Multi-tag Protein in HeLa

Western blot detection of His Tag in Multi-tag Protein, Multi-tag Protein in 293, Multi-tag Protein in HeLa cell lysates using His Tag antibody(1:1000 diluted).