

Recombinant

DGRmAb®

beta Tubulin (DGR11132) Rabbit mAb

db11073

Package : 10µL 20µL 100µL 500µL 1mL

Product Name : beta Tubulin (DGR11132) Rabbit mAb

Cat.No.: db11073

Synonyms : CDCBM7; PMGYSA; bA506K6.1

Application : WB, IHC-P, ICC/IF, FC

Reactivity : Human,Mouse,Rat

Host species : Rabbit

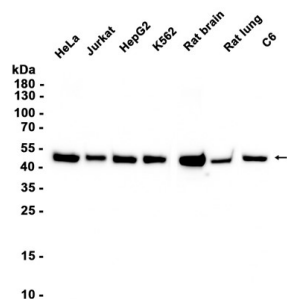
Background	The protein encoded by this gene is a beta isoform of tubulin, which binds GTP and is a major component of microtubules. This gene is highly similar to TUBB2A and TUBB2C. Defects in this gene are a cause of asymmetric polymicrogyria. [provided by RefSeq, Mar 2010]
Immunogen	A synthetic peptide of human beta Tubulin
Gene ID	347733
Swiss Prot	Q9BVA1
Synonyms	CDCBM7; PMGYSA; bA506K6.1
Reactivity	Human,Mouse,Rat
Application	WB, IHC-P, ICC/IF, FC
Recommended dilution	WB: 1:1000 IHC-P: 1:100-1:200 ICC/IF: 1:500-1:1000 FC: 1:100
Calculated MW	50 kDa
Observed MW	50 kDa
Host species	Rabbit
Clonality	Monoclonal
Clonality No.	DGR11132
Isotype	IgG
Purity	Affinity Purification

Conjugation

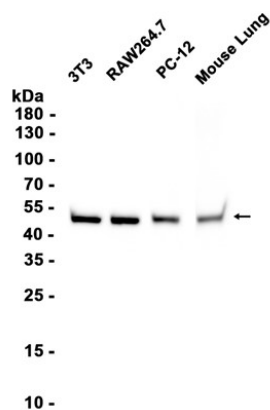
Un-conjugated

Storage Stability

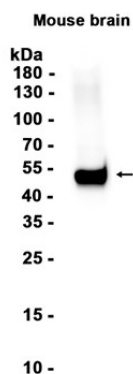
Store at -20°C. Supplied in 50mM Tris-Glycine(pH 7.4), 0.15M NaCl, 40% Glycerol, 0.01% sodium azide and 0.05% BSA. Stable for 12 months from date of receipt.



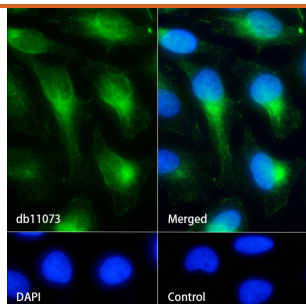
Western blot analysis of extracts from HeLa, Jurkat, HepG2, K562, C6 cells and Rat brain, Rat lung tissues using db11073 at 1:5000.



Western blot analysis of extracts from 3T3, RAW264.7, PC-12 and Mouse lung tissue using db11073 at 1:5000.



Western blot analysis of extracts from Mouse brain tissue using db11073 at 1:5000.



Immunofluorescence analysis of HeLa cells labelling beta Tubulin with db11073.

The cells were fixed with 4% PFA (10min, RT) followed by treatment with 0.1% Triton X-100 (10min, RT), and blocked in 1% BSA/10% normal goat serum/0.3M glycine in 0.1% PBS-Tween 20 for 1h. The cells were then incubate with db11073 (1:500) at room temperature for 1h, followed by a further incubation at room temperature for 45min with Goat Anti Rabbit IgG (H+L)-AF488 (db10005, shown in green). Nuclear DNA was labeled in blue with DAPI.

Control: Secondary antibody only.