

Recombinant

DGRmAb®

Actin (DGR13070) Rabbit mAb

db11112

Package : 10µL 20µL 100µL 500µL 1mL

Product Name : Actin (DGR13070) Rabbit mAb**Cat.No.:** db11112**Synonyms** : ACTA; ASMA; CFTD; MPFD; NEM1; NEM2; NEM3; SHPM; CFTD1; CFTDM**Application** : WB, ICC/IF, FC**Reactivity** : Human,Mouse,Rat**Host species** : Rabbit**Background**

The product encoded by this gene belongs to the actin family of proteins, which are highly conserved proteins that play a role in cell motility, structure and integrity. Alpha, beta and gamma actin isoforms have been identified, with alpha actins being a major constituent of the contractile apparatus, while beta and gamma actins are involved in the regulation of cell motility. This actin is an alpha actin that is found in skeletal muscle. Mutations in this gene cause nemaline myopathy type 3, congenital myopathy with excess of thin myofilaments, congenital myopathy with cores, and congenital myopathy with fiber-type disproportion, diseases that lead to muscle fiber defects. [provided by RefSeq, Jul 2008]

Immunogen

A synthetic peptide of human Actin

Gene ID

58

Swiss Prot

P68133

Synonyms

ACTA; ASMA; CFTD; MPFD; NEM1; NEM2; NEM3; SHPM; CFTD1; CFTDM

Reactivity

Human,Mouse,Rat

Application

WB, ICC/IF, FC

Recommended dilutionWB: 1:1000
ICC/IF: 1:500-1:1000
FC: 1:100**Calculated MW**

42 kDa

Observed MW

42 kDa

Host species

Rabbit

Clonality

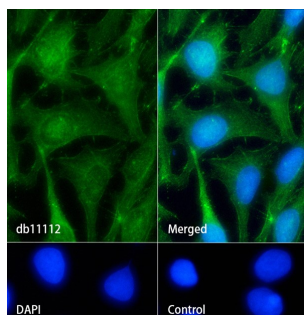
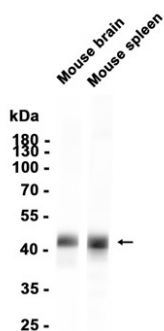
Monoclonal

Clonality No.

DGR13070

Isotype	IgG
Purity	Affinity Purification
Conjugation	Un-conjugated
Storage Stability	Store at -20°C. Supplied in 50mM Tris-Glycine(pH 7.4), 0.15M NaCl, 40% Glycerol, 0.01% sodium azide and 0.05% BSA. Stable for 12 months from date of receipt.

Western blot analysis of extracts from Mouse brain, Mouse spleen tissue using db11112 at 1:1000.



Immunofluorescence analysis of HeLa cells labelling Actin with db11112.

The cells were fixed with cold 100% methanol (10min, 4°C) and blocked in 1% BSA/10% normal goat serum/0.3M glycine in 0.1% PBS-Tween 20 for 1h. The cells were then incubate with db11112 (1:500) at room temperature for 1h, followed by a further incubation at room temperature for 45min with Goat Anti Rabbit IgG (H+L)-AF488 (db10005, shown in green). Nuclear DNA was labeled in blue with DAPI.

Control: Secondary antibody only.