

Recombinant

DGRmAb®

## SMARCC2/BAF170 (DGR34207) Rabbit mAb

db11214

Package : 10µL 20µL 50µL 100µL

**Product Name :** SMARCC2/BAF170 (DGR34207) Rabbit mAb**Cat.No.:** db11214**Synonyms :** CSS8; Rsc8; BAF170; CRACC2**Application :** WB, IHC-P, ICC/IF, FC, IP**Reactivity :** Human,Mouse,Rat**Host species :** Rabbit**Background**

The protein encoded by this gene is a member of the SWI/SNF family of proteins, whose members display helicase and ATPase activities and which are thought to regulate transcription of certain genes by altering the chromatin structure around those genes. The encoded protein is part of the large ATP-dependent chromatin remodeling complex SNF/SWI and contains a predicted leucine zipper motif typical of many transcription factors. Alternatively spliced transcript variants encoding different isoforms have been found for this gene. [provided by RefSeq, Jul 2008]

**Immunogen**

A synthetic peptide of human SMARCC2

**Gene ID**

6601, 68094, 362815

**Swiss Prot**

Q8TAQ2, Q6PDG5

**Synonyms**

CSS8; Rsc8; BAF170; CRACC2

**Reactivity**

Human,Mouse,Rat

**Application**

WB, IHC-P, ICC/IF, FC, IP

**Recommended dilution**

WB: 1:1000

IHC-P: 1:200-1:1000

ICC/IF: 1:100

FC: 1:200-1:500

IP: 1:20-1:50

**Calculated MW**

133 kDa

**Observed MW**

170 kDa

**Host species**

Rabbit

**Clonality**

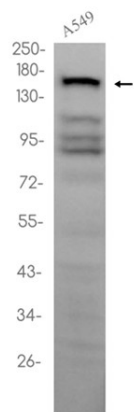
Monoclonal

**Clonality No.**

DGR34207

Isotype	IgG
Purity	Affinity Purification
Conjugation	Un-conjugated
Storage Stability	Store at -20°C. Supplied in 50mM Tris-Glycine(pH 7.4), 0.15M NaCl, 40% Glycerol, 0.01% sodium azide and 0.05% BSA. Stable for 12 months from date of receipt.

Western blot analysis of extracts from A549 cells using db11214 at 1:1000.



Western blot analysis of extracts from HCT116 cells and Rat spleen tissue using db11214 at 1:1000.

