

Recombinant

DGRmAb®

BTG1 (DGR34424) Rabbit mAb

db11288

Package : 10µL 20µL 50µL 100µL

Product Name : BTG1 (DGR34424) Rabbit mAb**Cat.No.:** db11288**Synonyms** : APRO2**Application** : WB, FC**Reactivity** : Human,Mouse,Rat**Host species** : Rabbit**Background**

This gene is a member of an anti-proliferative gene family that regulates cell growth and differentiation. Expression of this gene is highest in the G0/G1 phases of the cell cycle and downregulated when cells progressed through G1. The encoded protein interacts with several nuclear receptors, and functions as a coactivator of cell differentiation. This locus has been shown to be involved in a t(8;12)(q24;q22) chromosomal translocation in a case of B-cell chronic lymphocytic leukemia. [provided by RefSeq, Oct 2008]

Immunogen

A synthetic peptide of human BTG1

Gene ID

694, 12226, 29618

Swiss Prot

P62324, P62325, Q63073

Synonyms

APRO2

Reactivity

Human,Mouse,Rat

Application

WB, FC

Recommended dilution

WB: 1:1000-1:5000

FC: 1:10-1:100

Calculated MW

19 kDa

Observed MW

19 kDa

Host species

Rabbit

Clonality

Monoclonal

Clonality No.

DGR34424

Isotype

IgG

Purity

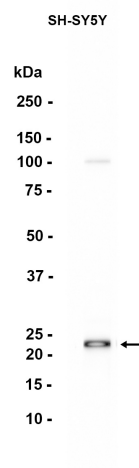
Affinity Purification

Conjugation

Un-conjugated

Storage Stability

Store at -20°C. Supplied in 50mM Tris-Glycine(pH 7.4), 0.15M NaCl, 40% Glycerol, 0.01% sodium azide and 0.05% BSA. Stable for 12 months from date of receipt.



Western blot analysis of extracts from SH-SY5Y cells using db11288 at 1:1000.