

Recombinant

DGRmAb®

**GIRK2 (DGR20838) Rabbit mAb**

db11321

Package : 10µL 20µL 50µL 100µL

**Product Name** : GIRK2 (DGR20838) Rabbit mAb**Cat.No.:** db11321**Synonyms** : ww; BIR1; GIRK2; KATP2; KCNJ7; Kir3.2; weaver**Application** : WB, IP**Reactivity** : Mouse,Rat**Host species** : Rabbit**Background**

Enables G-protein activated inward rectifier potassium channel activity. Acts upstream of or within thyroid hormone metabolic process. Located in parallel fiber to Purkinje cell synapse. Is integral component of presynaptic membrane. Is expressed in several structures, including alimentary system; brain; eye; genitourinary system; and skeleton. Human ortholog(s) of this gene implicated in alcohol use disorder and heroin dependence. Orthologous to human KCNJ6 (potassium inwardly rectifying channel subfamily J member 6). [provided by Alliance of Genome Resources, Apr 2022]

**Immunogen**

Recombinant protein of mouse GIRK2

**Gene ID**

16522, 25743

**Swiss Prot**

P48550, Unigene, 328720

**Synonyms**

ww; BIR1; GIRK2; KATP2; KCNJ7; Kir3.2; weaver

**Reactivity**

Mouse,Rat

**Application**

WB, IP

**Recommended dilution**WB: 1:1000  
IP: 1:20-1:50**Calculated MW**

49 kDa

**Observed MW**

46 kDa

**Host species**

Rabbit

**Clonality**

Monoclonal

**Clonality No.**

DGR20838

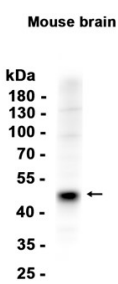
**Isotype**

IgG

**Purity**

Affinity Purification

Conjugation	Un-conjugated
Storage Stability	Store at -20°C. Supplied in 50mM Tris-Glycine(pH 7.4), 0.15M NaCl, 40% Glycerol, 0.01% sodium azide and 0.05% BSA. Stable for 12 months from date of receipt.



Western blot analysis of extracts from Mouse brain tissue using db11321 at 1:1000.