

Recombinant

DGRmAb®

**GSK3 alpha/beta (DGR14262) Rabbit mAb**

db11332

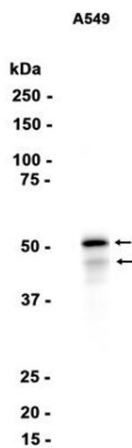
Package : 10µL 20µL 50µL 100µL

**Product Name** : GSK3 alpha/beta (DGR14262) Rabbit mAb**Cat.No.:** db11332**Application** : WB, IHC-P, ICC/IF, FC, IP**Reactivity** : Human,Mouse,Rat**Host species** : Rabbit

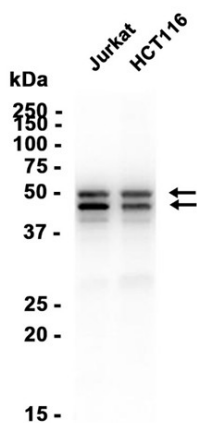
<b>Background</b>	This gene encodes a multifunctional Ser/Thr protein kinase that is implicated in the control of several regulatory proteins including glycogen synthase, and transcription factors, such as JUN. It also plays a role in the WNT and PI3K signaling pathways, as well as regulates the production of beta-amyloid peptides associated with Alzheimer's disease. [provided by RefSeq, Oct 2011]
<b>Immunogen</b>	Recombinant protein of human GSK3 alpha
<b>Gene ID</b>	2931, 2932
<b>Swiss Prot</b>	P49840, P49841
<b>Reactivity</b>	Human,Mouse,Rat
<b>Application</b>	WB, IHC-P, ICC/IF, FC, IP
<b>Recommended dilution</b>	WB: 1:1000-1:5000 IHC-P: 1:500-1:2000 ICC/IF: 1:100 FC: 1:50-1:100 IP: 1:20-1:50
<b>Calculated MW</b>	51,47 kDa
<b>Observed MW</b>	51,47 kDa
<b>Host species</b>	Rabbit
<b>Clonality</b>	Monoclonal
<b>Clonality No.</b>	DGR14262
<b>Isotype</b>	IgG
<b>Purity</b>	Affinity Purification
<b>Conjugation</b>	Un-conjugated

**Storage Stability**

Store at -20°C. Supplied in 50mM Tris-Glycine(pH 7.4), 0.15M NaCl, 40% Glycerol, 0.01% sodium azide and 0.05% BSA. Stable for 12 months from date of receipt.



Western blot analysis of extracts from A549 cells using db11332 at 1:1000.



Western blot analysis of extracts from Jurkat, HCT116 cells using db11332 at 1:2000.