

Recombinant

DGRmAb®

**MMP2 (DGR34836) Rabbit mAb**

db11356

Package : 10µL 20µL 50µL 100µL

**Product Name :** MMP2 (DGR34836) Rabbit mAb**Cat.No.:** db11356**Synonyms :** CLG4; MONA; CLG4A; MMP-2; TBE-1; MMP-II**Application :** WB, IP**Reactivity :** Human,Mouse,Rat**Host species :** Rabbit**Background**

This gene is a member of the matrix metalloproteinase (MMP) gene family, that are zinc-dependent enzymes capable of cleaving components of the extracellular matrix and molecules involved in signal transduction. The protein encoded by this gene is a gelatinase A, type IV collagenase, that contains three fibronectin type II repeats in its catalytic site that allow binding of denatured type IV and V collagen and elastin. Unlike most MMP family members, activation of this protein can occur on the cell membrane. This enzyme can be activated extracellularly by proteases, or, intracellularly by its S-glutathiolation with no requirement for proteolytical removal of the pro-domain. This protein is thought to be involved in multiple pathways including roles in the nervous system, endometrial menstrual breakdown, regulation of vascularization, and metastasis. Mutations in this gene have been associated with Winchester syndrome and Nodulosis-Arthropathy-Osteolysis (NAO) syndrome. Alternative splicing results in multiple transcript variants encoding different isoforms. [provided by RefSeq, Oct 2014]

**Immunogen**

Recombinant protein of human MMP2

**Gene ID**

4313, 17390, 81686

**Swiss Prot**

P08253, P33434, P33436

**Synonyms**

CLG4; MONA; CLG4A; MMP-2; TBE-1; MMP-II

**Reactivity**

Human,Mouse,Rat

**Application**

WB, IP

**Recommended dilution**WB: 1:1000  
IP: 1:20-1:50**Calculated MW**

74 kDa

**Observed MW**

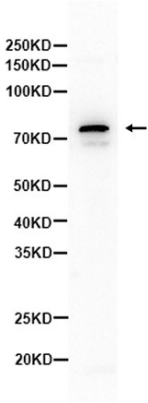
74 kDa

**Host species**

Rabbit

Clonality	Monoclonal
Clonality No.	DGR34836
Isotype	IgG
Purity	Affinity Purification
Conjugation	Un-conjugated
Storage Stability	Store at -20°C. Supplied in 50mM Tris-Glycine(pH 7.4), 0.15M NaCl, 40% Glycerol, 0.01% sodium azide and 0.05% BSA. Stable for 12 months from date of receipt.

Raw264.7



Western blot analysis of extracts from Raw264.7 cells using db11356 at 1:1000.