

Recombinant

DGRmAb®

MYL3 (DGR34506) Rabbit mAb

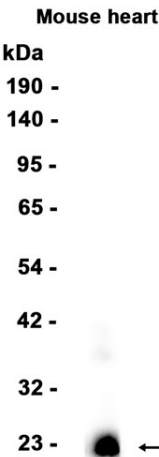
db11367

Package : 10µL 20µL 50µL 100µL

Product Name : MYL3 (DGR34506) Rabbit mAb**Cat.No.:** db11367**Synonyms** : CMH8; VLC1; VLCI; MLC1V; MLC1SB; MLC-IV/sb**Application** : WB**Reactivity** : Human,Mouse,Rat**Host species** : Rabbit

Background	MYL3 encodes myosin light chain 3, an alkali light chain also referred to in the literature as both the ventricular isoform and the slow skeletal muscle isoform. Mutations in MYL3 have been identified as a cause of mid-left ventricular chamber type hypertrophic cardiomyopathy. [provided by RefSeq, Jul 2008]
Immunogen	A synthetic peptide of human MYL3
Gene ID	4634, 17897, 24585
Swiss Prot	P08590, P09542, P16409
Synonyms	CMH8; VLC1; VLCI; MLC1V; MLC1SB; MLC-IV/sb
Reactivity	Human,Mouse,Rat
Application	WB
Recommended dilution	WB: 1:1000-1:5000
Calculated MW	22 kDa
Observed MW	22 kDa
Host species	Rabbit
Clonality	Monoclonal
Clonality No.	DGR34506
Isotype	IgG
Purity	Affinity Purification
Conjugation	Un-conjugated
Storage Stability	Store at -20°C. Supplied in 50mM Tris-Glycine(pH 7.4), 0.15M NaCl, 40% Glycerol, 0.01% sodium

azide and 0.05% BSA. Stable for 12 months from date of receipt.



Western blot analysis of extracts from Mouse heart tissue using db11367 at 1:1000.