

Recombinant

DGRmAb®

Phospho-RAF1 (Ser43) (DGR35930) Rabbit mAb

db11413

Package : 10µL 20µL 50µL 100µL

Product Name : Phospho-RAF1 (Ser43) (DGR35930) Rabbit mAb**Cat.No.:** db11413**Synonyms :** NS5; CRAF; Raf-1; c-Raf; CMD1NN**Application :** WB**Reactivity :** Human,Mouse,Rat**Host species :** Rabbit**Background**

This gene is the cellular homolog of viral raf gene (v-raf). The encoded protein is a MAP kinase kinase kinase (MAP3K), which functions downstream of the Ras family of membrane associated GTPases to which it binds directly. Once activated, the cellular RAF1 protein can phosphorylate to activate the dual specificity protein kinases MEK1 and MEK2, which in turn phosphorylate to activate the serine/threonine specific protein kinases, ERK1 and ERK2. Activated ERKs are pleiotropic effectors of cell physiology and play an important role in the control of gene expression involved in the cell division cycle, apoptosis, cell differentiation and cell migration. Mutations in this gene are associated with Noonan syndrome 5 and LEOPARD syndrome 2. [provided by RefSeq, Jul 2008]

Immunogen

A synthetic phosphopeptide corresponding to residues surrounding Ser43 of human RAF1

Gene ID

5894, 110157, 24703

Swiss Prot

P04049, Q99N57, P11345

Synonyms

NS5; CRAF; Raf-1; c-Raf; CMD1NN

Reactivity

Human,Mouse,Rat

Application

WB

Recommended dilution

WB: 1:1000-1:5000

Calculated MW

73 kDa

Observed MW

73 kDa

Host species

Rabbit

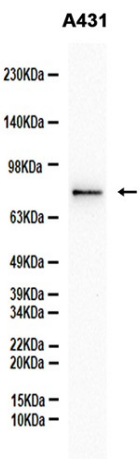
Clonality

Monoclonal

Clonality No.

DGR35930

Isotype	IgG
Purity	Affinity Purification
Conjugation	Un-conjugated
Storage Stability	Store at -20°C. Supplied in 50mM Tris-Glycine(pH 7.4), 0.15M NaCl, 40% Glycerol, 0.01% sodium azide and 0.05% BSA. Stable for 12 months from date of receipt.



Western blot analysis of extracts from A431 cells using db11413 at 1:1000.