

Recombinant

DGRmAb®

Ki67 (DGR12012) Rabbit mAb

db11666

Package : 10μL 20μL 50μL 100μL

Product Name : Ki67 (DGR12012) Rabbit mAb**Cat.No.:** db11666**Synonyms** : KIA; MIB-; MIB-1; PPP1R105**Application** : WB, IHC, ICC/IF, FC**Reactivity** : Human**Host species** : Rabbit**Background**

This gene encodes a nuclear protein that is associated with and may be necessary for cellular proliferation. Alternatively spliced transcript variants have been described. A related pseudogene exists on chromosome X. [provided by RefSeq, Mar 2009]

Immunogen

A synthetic peptide of human Ki67

Gene ID

4288

Swiss Prot

P46013

Synonyms

KIA; MIB-; MIB-1; PPP1R105

Reactivity

Human

Application

WB, IHC, ICC/IF, FC

Recommended dilution

WB: 1:1000

IHC: 1:500

ICC/IF: 1:500

FC: 1:100

Calculated MW

359 kDa

Observed MW

359 kDa

Host species

Rabbit

Clonality

Monoclonal

Clonality No.

DGR12012

Isotype

IgG

Purity

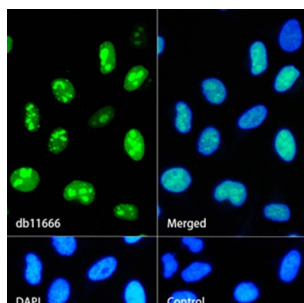
Affinity Purification

Conjugation

Un-conjugated

Storage Stability

Store at -20°C. Supplied in 50mM Tris-Glycine(pH 7.4), 0.15M NaCl, 40% Glycerol, 0.01% sodium azide and 0.05% BSA. Stable for 12 months from date of receipt.



Immunofluorescence analysis of HeLa cells labelling Ki67 with db11666.

The cells were fixed with 4% PFA (10min, RT) followed by treatment with 0.1% Triton X-100 (10min, RT), and blocked in 1% BSA/10% normal goat serum/0.3M glycine in 0.1% PBS-Tween 20 for 1h. The cells were then incubate with db11666 (1:500) at room temprature for 1h, followed by a further incubation at room temperature for 45min with Goat Anti Rabbit IgG (H+L)-AF488 (db10005, shown in green). Nuclear DNA was labeled in blue with DAPI.

Control: Secondary antibody only.